



**Elk Island Catholic Schools
Provincial Achievement Tests & Diploma Examinations
Summary Jurisdiction Results Report
2016-2017**

**Executive Summary
Prepared for the Board of Trustees**

January 2018

**Thérèse deChamplain-Good
Director of Educational Excellence**

Achievement test and diploma examination results provide a snapshot of the performance of the province, school jurisdiction, and school.

At Elk Island Catholic Schools (EICS), our mission is to develop educational opportunities in the context of Gospel values, where students' gifts and talents are celebrated and nurtured through lifelong spiritual and personal experiences. Through the efforts of our caring and dedicated parents and staff, our students are provided with a faith-based quality learning environment where they are safe and supported as they strive toward excellence in academics, athletics, fine arts and spiritual growth and development.

Assessment Practices at EICS

Teachers gather information about student progress on outcomes prescribed by Alberta Education's programs of study before, during and after instruction.

Before Learning - Diagnostic Assessments:

Diagnostic assessment is a form of **pre-assessment** that allows a teacher to determine students' individual strengths, weaknesses, knowledge, and skills prior to and during instruction to guide planning and instruction.

Examples: diagnostic reading assessments, pre-tests

During Learning - Assessment for Learning (Formative assessment):

Formative assessment is information gathered during instruction to determine concepts that students know and can do and what they are struggling to understand, skills they are having difficulty acquiring, or learning outcomes they have not yet achieved. These assessments are not used on report cards; they provide teachers and students information to guide what the student needs to do to improve performance.

Examples: mid-point quiz, feedback only comments on assignments and tests

After Learning - Assessment of Learning (Summative Assessment):

Summative assessment is information gathered by teachers after instruction to determine how well students learned the intended outcomes.

Examples: end of unit tests, performance tasks, projects and standardized tests such as Provincial Achievement tests and Diploma examinations.

These assessments are part of a balanced, broad-based program of student assessment. When analyzed along with many other indicators of student learning, they provide information to:

- ❖ determine if students are learning what they are expected to learn;
- ❖ assist schools and jurisdictions in monitoring and improving student learning
- ❖ guide instruction of educators and set targets for student achievement



Careful examination and interpretation of all assessments can help reveal areas of relative strength and weakness in student achievement. Teachers and administrators use this information in planning and delivering relevant and effective instruction in relation to learning outcomes in the Programs of Study

Overview of Division Results on Provincial Assessments

Elk Island Catholic Schools (EICS) performs well on standardized provincial assessments. Over the last five years, our **Grade 6, 9, and 12** students have **consistently outperformed** students provincially at the **acceptable standard by 2% overall**. The official achievement is reported in the Accountability Report.

Accountability Pillar Overall Summary
Annual Education Results Reports - Oct 2017
Authority: 0046 Elk Island Catholic Separate Regional Division No. 41



Measure Category	Measure	Elk Island CSRD # 41			Alberta			Measure Evaluation		
		Current Result	Prev Year Result	Prev 3 Year Average	Current Result	Prev Year Result	Prev 3 Year Average	Achievement	Improvement	Overall
Safe and Caring Schools	Safe and Caring	89.3	90.2	90.0	89.5	89.5	89.3	Very High	Maintained	Excellent
Student Learning Opportunities	Program of Studies	82.1	84.5	82.4	81.9	81.9	81.5	Very High	Maintained	Excellent
	Education Quality	89.0	90.1	89.6	90.1	90.1	89.6	High	Maintained	Good
	Drop Out Rate	0.4	0.8	0.8	3.0	3.2	3.3	Very High	Improved	Excellent
	High School Completion Rate (3 yr)	87.2	87.6	87.0	77.9	76.5	76.1	Very High	Maintained	Excellent
	PAT: Acceptable	78.2	80.4	79.9	73.4	73.6	73.2	Intermediate	Maintained	Acceptable
Student Learning Achievement (Grades K-9)	PAT: Excellence	17.9	18.0	17.4	19.5	19.4	18.8	Intermediate	Maintained	Acceptable
Student Learning Achievement (Grades 10-12)	Diploma: Acceptable	86.1	81.4	83.7	83.0	82.7	83.1	High	Improved	Good
	Diploma: Excellence	21.2	17.9	19.5	22.2	21.2	21.5	High	Maintained	Good
	Diploma Exam Participation Rate (4+ Exams)	69.2	66.1	69.4	54.9	54.6	53.1	Very High	Maintained	Excellent
	Rutherford Scholarship Eligibility Rate	74.2	69.4	69.4	62.3	60.8	60.8	n/a	Improved	n/a
Preparation for Lifelong Learning, World of Work, Citizenship	Transition Rate (6 yr)	70.8	74.5	74.3	57.9	59.4	59.3	Very High	Declined	Good
	Work Preparation	80.1	78.4	78.4	82.7	82.6	81.9	High	Maintained	Good
	Citizenship	83.1	84.8	84.4	83.7	83.9	83.6	Very High	Declined	Good
Parental Involvement	Parental Involvement	80.7	81.3	80.3	81.2	80.9	80.7	High	Maintained	Good
Continuous Improvement	School Improvement	81.6	84.7	81.8	81.4	81.2	80.2	Very High	Maintained	Excellent

Our Achievement Measure is:

- **Intermediate** and **Maintained** for the Provincial Achievement Tests at the Acceptable Standard
- **Intermediate** and **Maintained** for the Provincial Achievement Tests at the Standard of Excellence
- **High** and **Improved** for the Diploma Examinations at the Acceptable Standard
- **High** and **Maintained** for the Diploma Examinations at the Standard of Excellence

Our Three Year Average remains above the provincial three year average at the acceptable standard in both the Provincial Achievement Tests and the Diploma Examinations and continue to be below the provincial average at the standard of excellence.

In addition, the Accountability Pillar measures of success include:

- Drop Out Rate
- 3-Yr High School Completion Rate
- School Improvement

We are very proud of these results in particular:

- Our Drop Out Rate shows an Achievement measure of Very High and Overall Excellent
- Our 3-YR High School Completion Rate shows an Achievement measure of Very High and Overall Excellent
- Our School Improvement shows an Achievement measure of Very High and Overall Excellent.

Overall, the results confirm that students in EICS are learning what is expected by the province and achieving success.

Provincial Achievement Test Results 2016-2017

	Acceptable Standard			Standard of Excellence		
	EICS	PROV	+/-	EICS	PROV	+/-
ELA 6	89.1	82.5	+ 6.6	14.0	18.9	- 4.9
Math 6	71.3	68.4	+ 2.9	6.4	12.3	- 5.9
Math 6 (FI)	74.3	80.8	- 6.5	17.1	16.2	+ 0.9
Science 6	82.8	76.6	+ 6.2	27.7	29.5	- 1.8
Science 6 (FI)	81.4	81.5	- 0.1	25.7	21.9	+ 3.8
Social Studies 6	77.7	72.6	+ 1.5	23.5	22.4	+ 1.1
Social Studies 6 (FI)	67.1	76.2	- 9.1	7.1	12.8	- 5.7
FLA 6	78.6	85.1	- 6.5	15.7	13.5	+ 2.2
ELA 9	85.4	76.8	+ 8.6	13.6	14.9	- 1.3
Math 9	67.9	66.2	+ 1.7	16.2	18.7	- 2.5
Math 9 (FI)	87.9	82.5	+ 5.4	19.0	23.6	- 4.6
Science 9	78.8	73.2	+ 5.6	23.2	21.3	+ 1.9
Science 9 (FI)	96.4	86.0	+ 10.4	25.0	22.4	+ 2.6
Social Studies 9	67.8	66.3	+ 1.5	20.4	20.2	+ 0.2
Social Studies 9 (FI)	86.2	77.2	+ 9.0	15.5	20.9	- 5.4
FLA 9	82.3	83.1	- 0.8	12.9	11.2	+ 1.7
Overall Average +/-			+ 2.5			- 1.0

*Results Based on All Students Writing

Achievement:

- Overall Grades 6 and 9 students **exceeded** the provincial average at the **acceptable standard** in 11 out of 16 tests.
- Overall Grades 6 and 9 students **met or exceeded** the provincial average at the **standard of excellence** in 8 out of 16 tests.

Areas of Growth:

- The number of students achieving the **standard of excellence** across disciplines.
- The number of students achieving the **acceptable standard** in Grade 6

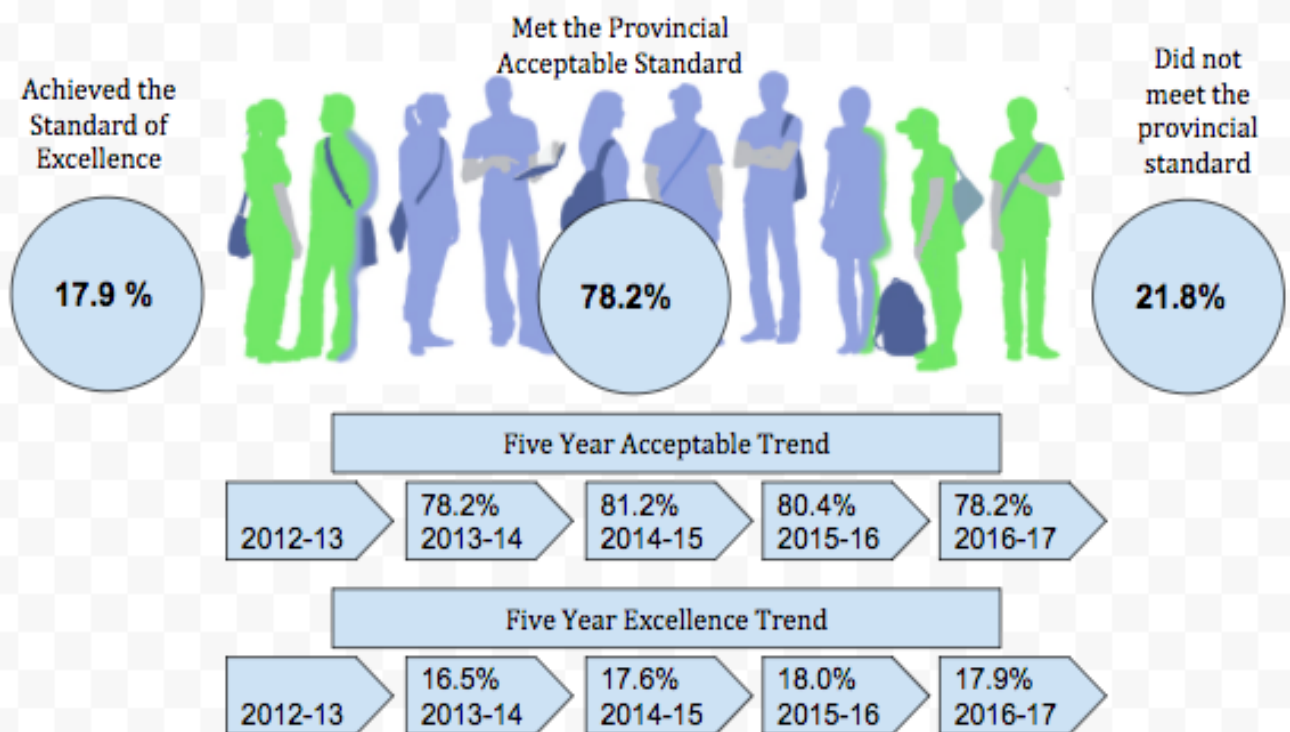
Overall:

We need to continue to focus on growth in terms of achievement and improvement based on our 5-year averages in the Standard of Excellence in all core areas.

Our Plan:

We will continue to focus on providing professional learning in the foundational areas of curriculum. Our consultants are reinforcing common language in all professional learning supports provided to teacher leads, during coaching sessions and in professional learning sessions. During our Active School Engagement visits, we will also discuss school plans for targeted improvement through internal results review with their staffs.

Provincial Achievement Test Results 2016-2017



2016 – 2017 EICS Diploma Exam 5-Year Results

Diploma Exam Results 2016-2017

	Acceptable Standard			Standard of Excellence		
	EICS	PROV	+/-	EICS	PROV	+/-
Biology 30	88.8	84.0	+4.8	36.0	32.1	+3.9
Chemistry 30	75.7	83.1	-7.4	26.1	38.6	-12.5
ELA 30-1	95.0	86.7	+8.3	14.2	12.0	+2.2
ELA 30-2	97.5	89.5	+8.0	17.2	11.3	+5.9
FLA 30-1	94.5	95.0	-0.4	9.1	9.3	-0.3
Physics 30	78.5	85.7	-7.2	34.6	41.7	-7.1
Math 30-1	73.7	72.9	+0.9	30.8	30.3	+0.3
Math 30-2	81.8	74.5	+7.3	18.9	15.6	+3.2
Science 30	89.9	84.8	+5.1	24.0	28.0	-3.9
Social Studies 30-1	87.1	86.0	+1.2	9.6	14.8	-5.2
Social Studies 30-2	82.4	80.5	+1.9	8.8	12.3	-3.5
Overall Average +/-			+2.0			-1.5

***Results Based on All Students Writing**

Achievement:

- Overall students **exceeded** the provincial average at the **acceptable standard** in 8 out of 11 exams with exceptional results in:
 - English Language Arts 30-1
 - English Language Arts 30-2
 - Math 30-2
 - Science 30
- Overall students **met or exceeded** the provincial average at the **standard of excellence** in 5 out of 11 exams with exceptional results in:
 - English Language Arts 30-2

Areas of Growth:

- The number of students achieving the **standard of excellence** across disciplines.
- The number of students achieving the **acceptable standard** and the **standard of excellence** in:
 - Chemistry 30
 - French Language Arts 30-1
 - Physics 30

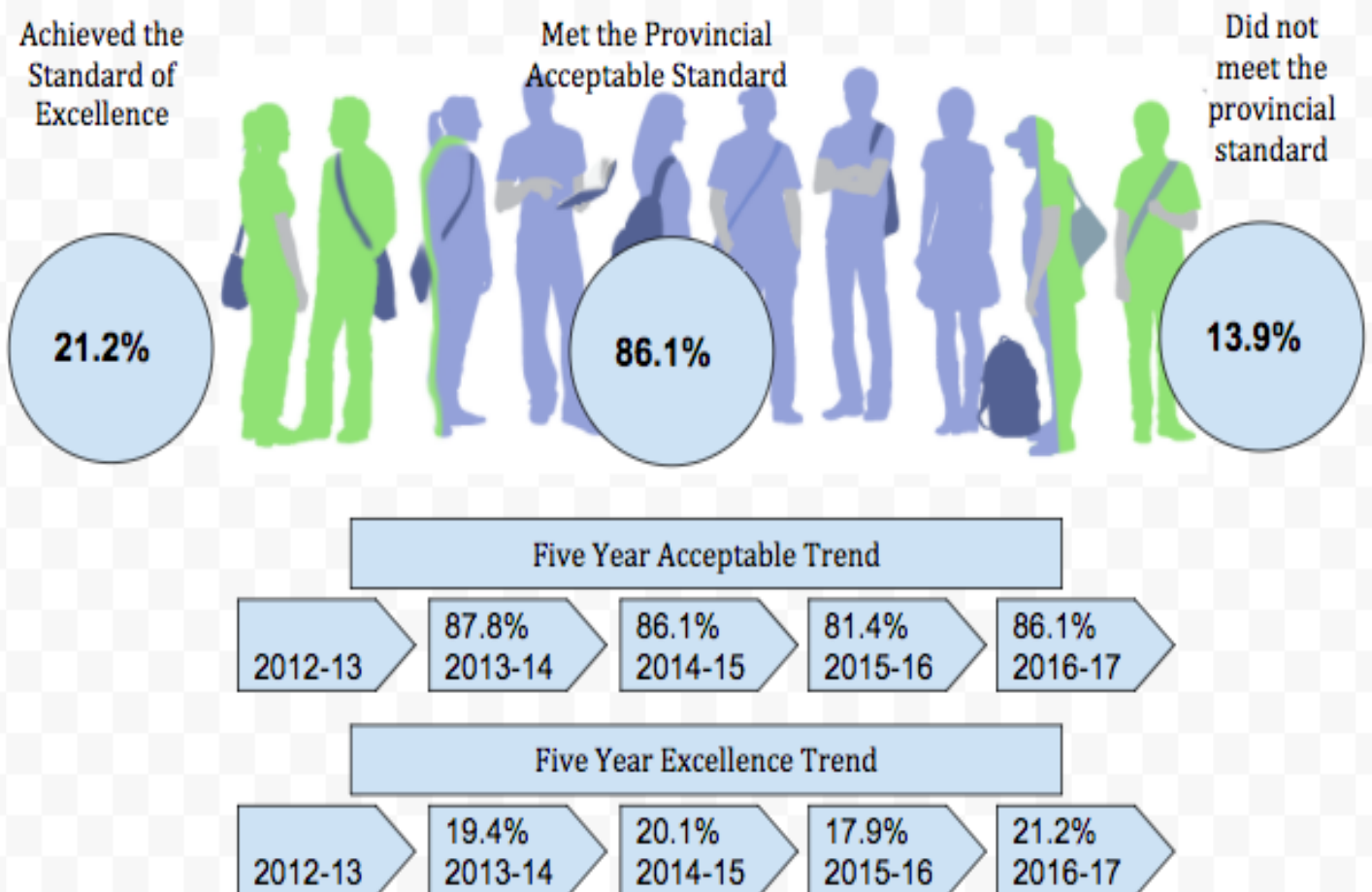
Overall:

We need to continue to focus on growth in terms of achievement and improvement based on our 5-year averages in the Standard of Excellence in all core areas.

Our Plan:

We will continue to focus on providing professional learning to target the achievement gap. We have continued to provide targeted support in the area of mathematics and the sciences with additional supports from contracted services and Alberta Education.

Diploma Examination Results 2016-2017



First Nation, Métis and Inuit Provincial Achievement Test and Diploma Examination Results 2016-2017

First Nation, Métis and Inuit Provincial Achievement Test and Diploma Examination Results 2016-2017

Meets Acceptable Standard				Meets Standard of Excellence				
	FNMI EICS	ALL EICS	Province	+/- EICS +/- Province	FNMI EICS	ALL EICS	Province	+/- EICS +/- Province
PATS	67.5%	78.2%	51.7%	-10.7 +15.8	8.6%	17%	6.7%	-8.4 +1.9
DIPS	87.3%	86.1%	77.1%	+1.2 +10.2	11.1%	21.2%	10.7%	-10.1 +0.4

*EICS had a total of 238 First Nation, Métis and Inuit students enrolled during the 2016-2017 school year.

EICS had 36 First Nation, Métis and Inuit students enrolled in Grades 6 and 9 during the 2016/2017 school year. Based on Provincial Achievement Test Results, our jurisdiction exceeded the provincial average at the Acceptable Standard by 15.8% and the Standard of Excellence by 1.9%. The Standard of Excellence continues to be an area for growth.

EICS had 14 First Nation, Métis and Inuit students enrolled in Grade 12 during the 2016/2017 school year. Based on Diploma Examination Results, our jurisdiction exceeded the provincial average at the Acceptable Standard by 10.2% and the Standard of Excellence by 0.4%. The Standard of Excellence continues to be an area of growth. Of these 14 students, 13 graduated with a high school diploma.

Meets Acceptable Standard			Meets Standard of Excellence			
First Nation, Métis and Inuit EICS Three Year Trend						
	2014-2015	2015-2016	2016-2017	2014-2015	2015-2016	2016-2017
PATS	67.0%	74.5%	67.5%	7.3%	9%	8.6%
DIPS	77.8%	82.0%	87.3%	7.4%	15.4%	11.1%

English Language Learners Provincial Achievement Test and Diploma Examination Results 2016-2017

Meets Acceptable Standard					Meets Standard of Excellence			
	ELL EICS	ALL EICS	ELL Province	+/- EICS +/- Province	ELL EICS	ALL EICS	ELL Province	+/- EICS +/- Province
PATS	70.5%	78.2%	69.3%	-7.7 +1.2	8.9%	17%	15%	-8.1 -6.1
DIPS	70.8%	86.1%	72.9%	-15.3 -2.1	12.5%	21.2%	16.5%	-8.7 -4.0

*EICS had a total of 395 ELL students enrolled during the 2016-2017 school year.

EICS has 68 English Language Learners enrolled in Grades 6 and 9 during the 2016/2017 school year. Based on Provincial Achievement Test Results, our jurisdiction exceeded the provincial average at the Acceptable Standard by 1.2% and achieved below the Standard of Excellence by -6.1%. The Standard of Excellence continues to be an area for growth.

EICS has 29 English Language Learners enrolled in Grade 12 during the 2016/2017 school year. Based on Diploma Exam Results, our jurisdiction achieved below the Acceptable Standard by -2.1 and below the Standard of Excellence by -4.1. This continues to be an area of growth for our jurisdiction. Of these 29 students, 21 graduated with a high school diploma.

Meets Acceptable Standard				Meets Standard of Excellence		
English Language Learners Three Year Trend						
	2014-2015	2015-2016	2016-2017	2014-2015	2015-2016	2016-2017
PATS	54.9%	65.7%	70.5%	6.3%	3.9%	8.9%
DIPS	75.4%	70.8%	70.8%	17.5%	8.3%	12.5%