

- 
1. **Call to Order**
  2. **Opening Prayer – Vice Chair Ted Paszek**
    - 2.1 Prayers of Condolence
    - 2.2 Other Intentions as presented
  3. **Singing of O Canada**
  4. **Acknowledgment of Land and People**

*Elk Island Catholic Schools acknowledges that we are, in all the schools and communities of EICS, located within the traditional land of Treaty No.6 and home of the Métis Nation. We also acknowledge the Inuit and other diverse Indigenous peoples whose ancestors have marked their territory since time immemorial, a place that has welcomed many peoples from around the world to make their home here.*

*These traditional territories are a vast area encompassing large portions of central Alberta and central Saskatchewan, an area in which we live, work and play each and every day.*
  5. **Approval of the Agenda**
  6. **Approval of Minutes**
    - 6.1 Approval of the Minutes of the Public Board Meeting held on May 29th, 2024
  7. **Presentations / Delegations**
    - 7.1 Faith Formation - Jody Seymour, Director Student and Staff Formation
  8. **Unfinished Business**
    - 8.1 Policy Committee
      - 8.1.1 Policy 16 - Recruitment and Selection of Personnel
      - 8.1.2 Policy 9 - Board Representatives
  9. **New Business**
    - 9.1 Superintendent Contract
  10. **Superintendent's Report**
    - 10.1 Superintendent Report - June 2024

11. **Secretary Treasurer's Report**

11.1. May Financial Report

11.2. May Governance Report

11.3. Imperial School District Establishment Ministerial  
Orders

11.3.1. Ministerial Orders: 007-2024, 008-2024, 009-2024

11.3.2. Ownership Map

12. **Items for Information**

12.1. Correspondence:

12.1.1. Alberta School Council's Association (ASCA)

12.2.

12.2.1. ACSTA:

12.2.2. ASBA:

13. **Board Meeting Evaluation**

14. **Closing Prayer - Trustee Shelley Charchun**

15. **Adjournment**

## Elk Island Catholic Separate School Division

Minutes of the Public Board Meeting

Held on May 29th, 2024 at 1:00 p.m.

Elk Island Catholic Schools, Sherwood Park, AB

Board Members Present:     Le-Ann Ewaskiw, Board Chair  
   Ted Paszek, Vice-Chair  
   Jean Boisvert  
   Shelley Charchun  
   Teresa Makowecki - via video conference  
   Dean Sarnecki  
   Al Stewart

Administration Present:     Paul Corrigan, Superintendent  
   Tracy Leigh, Secretary-Treasurer  
   Brett Cox, Assistant Superintendent Human Resources  
   Thérèse deChamplain-Good, Assistant Superintendent Educational  
   Excellence  
   Jody Seymour, Director of Student and Staff Formation  
   Michael Di Massa, Communications Coordinator  
   Lisa Wispinski, Recording Secretary

Public:                             0

---

<b>Call to Order</b>	Chair Ewaskiw called the meeting to order at 1:05 pm.
<b>Opening Prayer</b>	Trustee Sarnecki opened the meeting with prayer, and offered condolences to those who have lost loved ones.
<b>Singing of O'Canada</b>	The Board joined in the singing of O'Canada.
<b>Acknowledgement of Land and People</b>	Elk Island Catholic Schools acknowledges that we are, in all the schools and communities of EICS, located within the traditional land of Treaty No.6 and home of the Métis Nation. We also acknowledge the Inuit and other diverse Indigenous peoples whose ancestors have marked their territory since time immemorial, a place that has welcomed many peoples from around the world to make their home here.

	<p>These traditional territories are a vast area encompassing large portions of central Alberta and central Saskatchewan, an area in which we live, work and play each and every day</p>
<b>Approval of the Agenda</b>	<p><b>046/2024</b> Vice Chair Paszek moved that the agenda be adopted as circulated. <b>CARRIED.</b></p>
<b>Approval of the Minutes</b>	<p><b>047/2024</b> Trustee Stewart moved that the Board of Trustees approve the minutes of the April 17th, 2024 Public Board Meeting as circulated. <b>CARRIED.</b></p>
<b>Presentations / Delegations</b>	
<b>Faith Formation</b>	<p>Director Jody Seymour led the board in Faith Formation, on discipleship and how to live a life that shares and shows that everything we need is in Christ, which allows for an invitation for encounter to those we are walking with.</p> <p>The Board was offered an opportunity to reflect on their own experience with Jesus Christ.</p>
<b>Unfinished Business</b>	
<b>Policy 15 - Hearing on Teacher Transfers</b>	<p><b>048/2024</b> Trustee Sarnecki moved that the Board of Trustees approve <i>Policy 15 - Hearing on Teacher Transfers</i> as reviewed with no changes. <b>CARRIED.</b></p> <p>The Policy Committee recommended no changes to Policy 15 - Hearing on Teacher Transfers, the process is clear and aligns with the Education Act.</p>
<b>New Business</b>	
<b>2024-2025 Budget Presentation</b>	<p><b>Budget Highlights/Assumptions:</b></p> <ul style="list-style-type: none"> <li>● Government of Alberta has provided the division with a funding commitment of \$70,473,922 for the 2024/25 school year, an increase of \$769,075 over 2023/24.</li> <li>● The division is seeing enrolment growth over projections at Madonna Catholic School, Our Lady of the Angels Catholic School, and St. John II Catholic School.</li> <li>● Assumption was made that all collective agreements will be ratified within the 2024/2025 school year.</li> </ul> <p><b>Identified Financial Risks:</b></p> <ul style="list-style-type: none"> <li>● Significant variance in enrolment <ul style="list-style-type: none"> <li>○ If actual September enrolments are significantly higher, the division will need to use reserves to fund the service of those</li> </ul> </li> </ul>

students.

- Collective Agreements Expire
  - All 4 collective agreements end August 31, 2024. Any negotiated increases that are not funded would result in staffing reductions, higher class sizes and reduced service in schools.
- Benefit Premiums
  - ASEBP benefit premiums increased 33.65% over the last 4 years and are anticipated to increase 3-7% annually for the foreseeable future.
  - The cost of salaries, benefits, utilities and other inflationary pressures continue to increase.

### **Projected enrolment (provided to the province in January)**

- Elk Island Catholic Schools projects 8,419 full-time equivalent (FTE) students enrolled in Kindergarten through Grade 12 in the 2024/25 school year, a decrease of 61 FTE students over the previous school year.
- The division has expanded the Cogito program to K-4 in Fort Saskatchewan and 5-8 in Sherwood Park, actual enrolment is expected to exceed spring projections.
- Class sizes are anticipated to remain relatively consistent in all grade levels in the 2024/25 school year.

### **Weighted Moving Average**

Enrolment Year	FTE	Weighting Factor
2024/25	6484.0	50%
2023/24	6521.0	30%
2022/23	6166.5	20%
<b>WMA FTE Enrolment</b>	<b>6431.6</b>	

- The WMA for 2024/2025 is 88.15 FTE higher than 2023/2024 and funding is expected to increase for budget 2025 as the 2022/23 lower enrolment year drops off the three-year average.

### **Staffing Statistics**

The division is projected to staff:

- 343 FTE certificated positions in 2024/25, a decrease of 4 FTE from 2023/24.
- 261 full time equivalent non-certificated positions (CUPE, Unifor, Transportation and Non-Association) in 2024/25, a decrease of 4 FTEs from the 2023/24 school year.

### **Revenue**

Total provincial funding is \$78,798,140 which includes

- funding commitment of \$70,473,922

- Revenue recognized on the amortization of supported assets of \$4.4 million
- Pension funding for ATA of \$3.5 million
- Other grants anticipated at \$400K

**Expenses**

- Instruction: \$66M (78%) (This includes school operations and instructional services delivered centrally, such as technology services, consultants and the inclusive learning services department.)
- Operations and Maintenance: \$12.4M (15%) (This includes costs for maintaining our 17 schools in 5 communities and our Central Learning Services.) A renewed natural gas contract in May, resulted in a new natural gas rate of \$4.06/GJ, almost doubling the cost.
- Transportation: \$3.2M
- System Administration: \$2.6M
- External services: \$1,217

**Expenses by Object**

- Salaries and benefits are budgeted at \$62.9M or 75% of total expenses.
- Service, Contracts and Supplies are budgeted at \$15.6M.
- Budgeted amortization is budgeted at \$5.2M.

**Operating Reserves**

- The Division is projecting the use of \$365,442 of operating reserves for 2024/25.
- The projected accumulated operating reserves is \$3.0 million.
- Capital reserves are projected to be \$1.8 million at the end of the 2024/25 school year.
- Accumulated surplus from operations is budgeted to be 3.6% which is below the maximum operating reserve balance of 6% set by Alberta Education.

**Trustee Makowecki joined the meeting at 2:38 p.m.**

**Priority Based Budgeting**

- Faith Integration (\$620,490)
- Learners and Learning (\$5,957,990)
- Systemic Wellness (\$2,199,656)
- Community Engagement (\$545,731)

**049/2024** Trustee Boisvert moved that the Board of Trustees approve the 2024/2025 Budget and direct Administration to submit the Budget Report to the Minister of Education by May 31, 2024.

***CARRIED UNANIMOUSLY.***

Trustee Boisvert shared that the Audit Committee received the similar presentation, and were satisfied with the report that was presented. Trustee Boisvert expressed appreciation to the Secretary Treasurer, Superintendent, and School Administration for their work to provide a high quality learning environment within the funding provided.

**050/2024** Trustee Boisvert moved that the board direct administration to prepare a draft letter to the Minister of Education to provide adequate funding for inflationary costs and to provide in-year funding adjustments for the board.

***CARRIED UNANIMOUSLY.***

**Locally Developed Course Approval**

**051/2024** Trustee Sarnecki moved that the Board of Trustees approve the following new courses for use in our division schools:

Course Name	Version	Course Code	Approved Start Date
Broadcast Video 15	5 Credits (2024-2028)	LDC1786	August 29, 2024
Broadcast Video 25	5 Credits (2024-2028)	LDC2786	August 29, 2024
Cake Decorating 15	3 Credits (2023-2027)	LDC1620	August 29, 2024
Cake Decorating 25	3 Credits (2023-2027)	LDC2620	August 29, 2024
ESL Expository English Level 1 15	5 Credits (2024-2028)	LDC1271	August 29, 2024
ESL Expository English Level 2 15	5 Credits (2024-2028)	LDC1276	August 29, 2024
ESL Introduction to Mathematics 15	5 Credits (2024-2028)	LDC1350	August 29, 2024
Greek Language and Culture 3Y 15	5 Credits (2022-2026)	LDC1360	August 29, 2024
Greek Language and Culture 3Y 25	5 Credits (2022-2026)	LDC2360	August 29, 2024
Greek Language and Culture 3Y 35	5 Credits (2022-2026)	LDC3360	August 29, 2024
Reading Development 15	5 Credits (2024-2028)	LDC1311	August 29, 2024
Reading Foundations 15	3 Credits (2024-2028)	LDC1296	August 29, 2024
Speech and Debate 25	3 Credits (2024-2026)	LDC2244	August 29, 2024
Speech and Debate 35	3 Credits (2024-2026)	LDC3244	August 29, 2024

***CARRIED.***

<p><b>EICS Division Assurance Education Plan</b></p>	<p>Assistant Superintendent deChamplain-Good presented the 2024/25 Division Education Assurance Plan to the Board.</p> <p>Superintendent Corrigan shared that the highlights were shared with the Board at a Professional Development session earlier this year, which will be used to assist the board in preparing their assurance plan for next year.</p> <p><b>052/2024</b> Trustee Sarnecki moved that the Board of Trustees approves the 2024/25 Division Education Assurance Plan as presented.</p> <p style="text-align: right;"><b><i>CARRIED.</i></b></p>
<p><b>Superintendent Evaluation</b></p>	<p><b>053/2024</b> Vice Chair Paszek moved that the Board of Trustees approves the Superintendent’s Evaluation Report, as developed in the facilitated evaluation presentation of May 15th, 2024, as an accurate accounting of the Superintendent’s performance for the period August 01, 2023 to May 15, 2024;</p> <p>AND FURTHER, that the Board of Trustees authorizes the Board Chair to make any required technical edits and to sign the report on the Board’s behalf.</p> <p style="text-align: right;"><b><i>CARRIED UNANIMOUSLY.</i></b></p>
<p><b>Policy 16 - Recruitment and Selection of Personnel</b></p>	<p><b>054/2024</b> Trustee Sarnecki moved that the Board of Trustees approve amendments to <i>Board Policy 16 - Recruitment and Selection of Personnel</i>, as presented for first reading.</p> <p style="text-align: right;"><b><i>CARRIED.</i></b></p>
<p><b>Policy 9 - Board Representatives</b></p>	<p><b>055/2024</b> Trustee Sarnecki moved that the Board of Trustees approve amendments to <i>Board Policy 9 - Board Representatives</i>, as presented or amended for first reading.</p> <p style="text-align: right;"><b><i>CARRIED.</i></b></p> <p>Trustee Sarnecki highlighted the changes which include aligning the policy with current practice of the Board.</p>
<p><b>St. Isidore Learning Centre Exam Centre Code</b></p>	<p><b>056/2024</b> Trustee Boisvert moved that the Board of Trustees approve the procurement of an additional school code for St. Isidore Learning Center to accommodate students in the south of the province.</p> <p style="text-align: right;"><b><i>CARRIED.</i></b></p>
<p><b>Superintendent’s Report</b></p>	
	<p>Superintendent Corrigan shared updates on the following:</p> <ul style="list-style-type: none"> <li>● Letter of gratitude from Wolf Creek Public Schools, for use of the numeracy and literacy assessments created by Elk Island Catholic Schools consultants.</li> </ul>



- REAL Foundation Golf Tournament Fundraiser held on May 22, 2024 to raise funds for religious educational activities for our students.
- GrACE Summit held on May 10th, 2024
- ASBA Zone 2/3 MLA Engagement Evening held on May 8th, 2024
- CCSSA meetings held on April 29/30.
- Blueprints Retreat April 30-May 3.
- MCI summit April 18th
- Congratulations to Karen Antoniuk and Melissa Damur for their “Alberta Distinguished Leadership Award” from the ATA Council of School Leadership..
- Staffing Updates - ATA staffing is essential complete for the upcoming school year, with Unifor support staff recall taking place in June. Thank-you to Assistant Superintendent Cox and his team for their work this year.
- Our COR (Certificate of Recognition) program audit happened in the past several weeks, overviewing our Divisional Health and Safety program, allowing the division to focus and refine our health and safety procedures in the division.
- ASBA Honouring Spirit: Indigenous Awards, EICS had 2 students receive Honourable Mention Awards.
- Proud to present our CCSSA Excellence in Catholic Education award winner Elizabeth Esposito-McLean her award at Blueprints in May 2024.
- A number of EICS schools have signed up to pilot the new Social Studies curriculum.
- Celebrating the news of Pope Francis recognition of the second miracle attributed to the intercession of Blessed Carlo Acutis, paving the way for him to become the first millennial saint.
- Catholic Education Parent Advisory Council Meeting held on May 6th, 2024.
- Highlights of the St. John Paul II Catholic School Review. Thank-you to the staff, parents, and students of St. John Paul II Catholic School for their amazing work.

**057/2024** Trustee Charchun moved that the Board of Trustees receive the Superintendent Report as information.

***CARRIED.***

**Secretary Treasurer Report**

Secretary Treasurer Tracy Leigh presented the April Financial and Governance Reports.

**058/2024** Trustee Stewart moved that the Board of Trustees receive the

	Secretary-Treasurer's Report as information.	<b><i>CARRIED</i></b>
<b>Correspondence</b>		
	Chair Ewaskiw offered congratulations to Miraca Davies and Tonya Rain for their nominations for the ASBA Honouring Spirit: Indigenous Spirit Award.	
<b>Trustee Reports</b>		
<b>Alberta Catholic School Trustees' Association (ACSTA)</b>	Trustee Sarnecki shared a verbal report about ACSTA.  Trustee Sarnecki shared that Catholic Education Sunday will be celebrated on the third Sunday of October followed directly thereafter by Catholic Education Week, 2024 inclusive.	
<b>Alberta School Boards Association (ASBA)</b>	Trustee Boisvert shared a verbal report about ASBA.  <b>059/2024</b> Trustee Boisvert moved to accept verbal trustee reports as information.	
	<b><i>CARRIED.</i></b>	
<b>Board Meeting Evaluation</b>	Trustees were encouraged to complete the Board Meeting Evaluation.	
<b>Closing Prayer</b>	Trustee Boisvert led the closing prayer.	
<b>Adjournment</b>	Chair Ewaskiw declared the meeting adjourned at 4:42 p.m.	

---

Board Chair, Le-Ann Ewaskiw

---

Secretary Treasurer, Tracy Leigh

## Policy 9

---

### BOARD REPRESENTATIVES

The Board is represented in a number of associations **and at special events conferences**. Trustees and alternates are appointed as representatives by the Board, who will report to the Board **as required** on a regular basis.

The representatives will be determined at the annual Organizational Meeting. In the case of more than the assigned number of trustees submitting their intentions to represent the Board on each association, the Board Chair will request an election of those positions by secret ballot. Only the successful candidate(s) will be announced with the ballots being destroyed immediately after the election.

1. Alberta Catholic Schools Trustees Association Director (ACSTA)
  - 1.1 One (1) trustee and one (1) alternate trustee representative are appointed.
  - 1.2 **The trustee representative, while appointed by the board to represent the interests of EICS, recognizes that the ACSTA works to enhance, protect, and promote Catholic education province-wide. Generally issues are directed to those surrounding Catholic education. ~~The Trustee appointed to this position represents the Board's views at this provincial forum dedicated exclusively to Catholic Education issues.~~**
  - 1.3 When the ACSTA Board of Directors require decisions impacting finances or other important philosophies, the Director representing the Board will, **as best as possible**, consult with the Board in Committee of the Whole to obtain Board input.
  - 1.4 The ACSTA representative provides the Board with regular reports.
  - 1.5 The ACSTA Board of Directors meets **four times per year, plus when necessary to address arising issues. ~~approximately five (5) times a year including a three (3) day session where~~** The Board of Directors also participates in **professional and faith formation activities, ~~a retreat~~ and engage in an annual self-evaluation of the ACSTA Board and Executive Director.**
2. Alberta School Boards Association – Zone 2/3 (ASBA)
  - 2.1 One (1) Trustee and one (1) alternate Trustee representative are appointed.
  - 2.2 The Trustee appointed to this position represents the Board's views at this provincial forum dedicated to all educational issues **generally excluding ~~other than~~ Catholic Education issues which are more appropriate at ACSTA.** Information sharing, networking and professional development are priority agenda items at Zone meetings.
  - 2.3 The Zones are also a key internal communication link for the association, with a representative of the ASBA Board of Directors attending every Zone meeting to ensure two-way communication between the ASBA leadership and its membership.

- 2.4 One (1) trustee from each board is appointed the official Board representative; however all trustees may attend.
- 2.5 The ASBA representative provides the Board with regular reports.
- 2.6 ASBA Zone 2/3 meets approximately nine (9) times a year.
- 2.7 It is also expected that the Board Representative attends the ASBA Fall General Meeting and the ASBA Spring General Meeting, **plus meetings when necessary to address arising issues.**
- 2.8 Rural Caucus
  - 2.8.1. One (1) trustee and one (1) alternate trustee representative are appointed.
  - 2.8.2. The trustee appointed to this position attends the annual Rural Education Symposium. [Link to Symposium on ASBA Website](#)
  - 2.8.3 The Committee meets approximately three (3) times each school year, **plus when necessary to address arising issues.**
- 3. Education Foundation (REAL Foundation)
  - 3.1 One (1) trustee and one (1) alternate trustee representative are appointed.
  - 3.2 The trustee appointed to this position acts as a liaison between the Board and the Foundation.
  - 3.3 This Committee meets approximately **four** ~~five~~ times each school year.
- ~~4 Young Authors Conference Representative~~
  - ~~4.1 One (1) trustee and one (1) alternate trustee representative are appointed.~~
  - ~~4.2 The trustee appointed to this position attends the annual Young Authors Conference held in Sherwood Park each year to represent the Board and show support for this event.~~
- ~~5 Young Scientists Conference Representative~~
  - ~~5.1 One (1) trustee and one (1) alternate trustee representative are appointed.~~
  - ~~5.2 The trustee appointed to this position attends the annual Young Scientists Conference held at the University of Alberta in the spring of each year to represent the Board and show support for this event.~~
- 6 Parish Representative
  - 6.1 All trustees are eligible to provide monthly reports on parish activities and events in support of our home, school and parish partnerships.
- 7 Catholic Education Parent Advisory Committee - CEPAC
  - 7.1 Trustees are welcome to attend these meetings and will receive invitations. The chair of these meetings is the superintendent or delegate. The superintendent will provide an update to the board in the superintendent's report following each meeting.** ~~Upon invitation by the Superintendent, a trustee will attend the CEPAC meetings. Trustees will alternate throughout the year.~~

~~7.2—Trustees act as a liaison between the Board and this Committee and provide  
—a short Board highlights report at each meeting.~~

7.3 This Committee meets approximately three (3) times each school year **plus  
when necessary to address arising issues.**

***Revised: November 2019***

Legal Reference: Section 33, 34, 51, 52, 53 Education Act

## Policy 16

---

### RECRUITMENT AND SELECTION OF PERSONNEL

~~The recruitment and selection of Division personnel is a shared responsibility between the Board and the Superintendent.~~

The Board ~~further~~ believes strong leadership and administration at the Division and school levels are essential to the effective and efficient operation of the school system.

The Board further recognizes that the superintendent is the ~~direct-sole~~ employee of the Board and ~~commits~~ entrusts the responsibility of ensuring personnel is in place for the smooth and effective operation of the ~~District~~ Division to the Superintendent and Administrative Policies.

#### Specifically

1. The Board has the sole authority to recruit and select an individual for the position of Superintendent.
  - 1.1 The hiring process will be established by the Board at the time of recruitment. All details will be established and determined by the Board. These may include the hiring of a recruiter and determining other responsibilities as necessary. ~~and will include advertisement of the position.~~
  - 1.2 The offer of employment shall be conditional on the successful applicant providing; a criminal record check, a child intervention check and a letter of reference from their Catholic Parish Priest.
2. ~~In the case of hiring the~~ Secretary-Treasurer: The Superintendent shall have the responsibility for the creation of the hiring process including initiating the advertising and short list of candidates, with a selection committee comprising of at least two (2) Trustees, Superintendent, and other appropriate stakeholders. This may include, but not limited to school administrators and relevant Learning Services Personnel.
  - 2.1 The successful candidate must be supported by the majority of the selection committee. The Superintendent must be one (1) of the votes in the majority.
  - 2.2 The Superintendent is delegated full authority to determine the Role Description and provide a written contract of employment and contract renewal.
  - 2.3 The offer of employment shall be conditional on the successful applicant providing; a criminal record check, a child intervention check and a letter of reference from their Catholic Parish Priest or other attesting to the willingness to work in a Catholic-integrated workplace.
3. The Superintendent is delegated full authority and responsibility to recruit and select for all EICS Central Learning Services Leadership positions and Team positions set out in the leadership structure created by the Superintendent.

4. The following process will be followed for the appointment of candidates to the positions of Principal and Assistant-Principal:
  - 4.1 The Superintendent shall form an Administrative Review Committee which will be the interview committee.
  - 4.2 The decision will normally be made by consensus of the interview committee. The Superintendent will have the final choice.
  - 4.3 The Superintendent is delegated full authority to make all decisions regarding the term and/or continuing appointments of school-based administrators.
5. The Superintendent is delegated full authority to recruit and select staff for all other school-based positions.
6. All offers of employment shall be conditional on the successful applicant providing a criminal record check and a child intervention check (CIC) that is acceptable to the Superintendent. Additionally, the Superintendent may require documentation certifying that the candidate is medically fit for the position.
7. For those positions requiring teacher certification, the Superintendent will hire certified applicants who are Catholic. Applicants are required to provide a satisfactory pastoral reference letter from their Catholic parish priest. Certified employees wishing to move from probationary contracts must provide an updated satisfactory pastoral reference letter from their Catholic parish priest.
8. The Superintendent may, due to extenuating circumstances, make individual exceptions to this practice when the District is unable to fill the vacancies requiring teacher certification, with qualified Catholics.
9. The job-posting process will be transparent making every reasonable effort to ensure all current Division employees are made aware of staff vacancies.

***Reviewed:***

***Revised: June 2019***

Legal Reference: Section 33, 52, 53, 68, 204, 222, 225 Education Act  
Freedom of Information and Protection of Privacy Act  
CCSSA Catholic Leadership Quality Standards.

## Recommendation Report

Date: June 19, 2024  
 To: EICS Board of Trustees  
 From: Superintendent Paul Corrigan  
 Subject: Locally Developed Courses  
 Originator: Assistant Superintendent Educational Excellence, Thérèse deChamplain-Good  
 Reference: Board Policy 2 - Role of the Board

**Recommendation:**

That the Board of Trustees approve the following new courses for use in our division schools:

Course Name	Version	Course Code	First Approved Year	Approved Start Date	Last Approved Year
Reading Foundations A 15	5 Credits (2024-2028)	LDC1296	2024-2025	August 29, 2024	2027-2028
Reading Foundations B 15	3 Credits (2024-2028)	LDC1311	2024-2025	August 29, 2024	2027-2028
Stained Glass 15	3 Credits (2024-2028)	LDC1659	2024-2025	August 29, 2024	2027-2028
Stained Glass 25	3 Credits (2024-2028)	LDC2659	2024-2025	August 29, 2024	2027-2028
Stained Glass 25	5 Credits (2024-2028)	LDC2659	2024-2025	August 29, 2024	2027-2028
Stained Glass 35	5 Credits (2024-2028)	LDC3659	2024-2025	August 29, 2024	2027-2028

**Background:**

Locally developed courses (LDCs) are developed or acquired and authorized by school authorities to provide students with learning opportunities that complement provincial programs of study. LDCs provide unique opportunities to explore a range of interests in subject areas or extend the learning



outcomes in provincial programs. These courses accommodate special interests and abilities of students, and address local, community or parental interests. Divisions may develop their own courses, or they may seek permission to acquire courses developed by other divisions.

Locally developed courses and resources must be approved and renewed every four years by the developing board. In the case of high school courses, the courses also must be assessed and approved by Alberta Education. The process is governed by Alberta Education policies.

**Process:**

1. As per our Administrative Procedure 218 – Locally Approved Courses - school leadership works with staff and students to provide recommendations to Central Learning Services for initial approval.
2. Any concerns with requests are brought forward and discussed with school leadership to ensure that programming is offered in accordance with Division priorities and strategic planning.
3. Alberta Education is contacted to ensure that the courses still meet their requirements and approvals.
4. Currently, it is required by Alberta Education to have Board approval for locally developed courses.

---

**1. Correspondence**

1.1.

**2. External Organizational Activities**

2.1. Canadian Catholic School Trustees' Association (CCSTA) Conference: May 30 - June 2, 2024.

2.2. Alberta School Boards Association (ASBA) Spring General Meeting: June 2 - 4, 2024.

2.3. Catholic Roundtable Session: June 12th, 2024

**3. Information**

3.1. Alumni award follow-up:

This idea was discussed with High School Principals who are in strong support of one divisional award each year to celebrate an EICS alumni. More to follow on this topic in the fall.

3.2. Use of Personal Mobile Devices in Schools: On Monday, we saw a Ministerial announcement outlining the limitation of personal devices (cell phones) and of social media at school. The EICS backgrounder can be found here. The Provincial mandate will begin Sept. 1 2024. School boards are given until Jan. 2024 to establish procedures for how this will be actioned locally. (i.e storage, non-compliance, exemptions)

**4. Community Engagement**

4.1. High school graduation activities

4.2. School year end mass/celebrations

4.3. Celebrating CLS Staff 5, 10, 15, and 20 years of service, and recognizing those staff from CLS that are retiring and/or moving on to new positions.

4.4. New Horizons recommendation

Statement of Program Revenues and Expenses									Actual 2022/23
For the Month Ended May 31, 2024									School Year
	Spring Budget	Instruction	Plant Operations	Transportation	Administration	External Services	Total Year-to-Date	% of Budget	TOTAL
	2023/24						Actual 2023/24		
Alberta Education	\$ 62,052,699	\$ 38,296,568	\$ 5,704,770	\$ 2,102,910	\$ 2,073,212	\$ 454,777	\$ 48,632,237	78.4%	\$ 62,161,515
Alberta Infrastructure (Supported Capital Amortization)	\$ 4,523,100	\$ 28,679	\$ 3,349,028	\$ -	\$ -	\$ -	\$ 3,377,707	74.7%	\$ 4,665,139
Other - Government of Alberta	\$ -	\$ -	\$ -	\$ -	\$ -	\$ -	\$ -	0.0%	\$ -
Federal Government	\$ 138,111	\$ 177,544	\$ -	\$ -	\$ -	\$ -	\$ 177,544	128.6%	\$ 110,369
Other Alberta School Authorities	\$ -	\$ 51,562	\$ -	\$ -	\$ -	\$ -	\$ 51,562	0.0%	\$ 38,937
Out of province authorities	\$ -	\$ -	\$ -	\$ -	\$ -	\$ -	\$ -	0.0%	\$ -
Alberta municipalities-special tax levies	\$ -	\$ -	\$ -	\$ -	\$ -	\$ -	\$ -	0.0%	\$ -
Property Taxes	\$ 10,380,210	\$ 7,785,158	\$ -	\$ -	\$ -	\$ -	\$ 7,785,158	75.0%	\$ 10,140,720
Fees	\$ 2,635,533	\$ 3,044,781	\$ -	\$ 383,117	\$ -	\$ -	\$ 3,427,898	130.1%	\$ 3,162,931
Sales of services and products	\$ 522,874	\$ 703,381	\$ 10,181	\$ 20,846	\$ 108	\$ 26,147	\$ 760,663	145.5%	\$ 741,604
Investment income	\$ 390,000	\$ 380,849	\$ -	\$ -	\$ -	\$ -	\$ 380,849	97.7%	\$ 460,771
Gifts and donations	\$ 356,279	\$ 188,488	\$ -	\$ -	\$ -	\$ -	\$ 188,488	52.9%	\$ 266,049
Rental of facilities	\$ 260,000	\$ -	\$ 154,503	\$ 33,163	\$ -	\$ -	\$ 187,666	72.2%	\$ 177,351
Fundraising	\$ 118,595	\$ 192,570	\$ -	\$ -	\$ -	\$ -	\$ 192,570	162.4%	\$ 155,521
Gains on disposal of tangible capital assets	\$ -	\$ -	\$ 5,500	\$ -	\$ -	\$ -	\$ 5,500	0.0%	\$ 13,126
Other	\$ -	\$ -	\$ -	\$ -	\$ -	\$ -	\$ -	0.0%	\$ 92,527
<b>TOTAL REVENUES</b>	<b>\$ 81,377,401</b>	<b>\$ 50,849,581</b>	<b>\$ 9,223,982</b>	<b>\$ 2,540,035</b>	<b>\$ 2,073,321</b>	<b>\$ 480,924</b>	<b>\$ 65,167,843</b>	<b>80.1%</b>	<b>\$ 82,186,560</b>
<b>EXPENSES</b>									
Certificated salaries	\$ 36,354,064	\$ 26,943,807	\$ -	\$ -	\$ 515,039	\$ 388,853	\$ 27,847,699	76.6%	\$ 37,098,683
Certificated benefits	\$ 9,069,485	\$ 6,412,836	\$ -	\$ -	\$ 124,401	\$ 89,437	\$ 6,626,674	73.1%	\$ 8,720,984
Non-certificated salaries and wages	\$ 12,808,239	\$ 6,700,994	\$ 2,350,037	\$ 1,112,425	\$ 986,540	\$ 2,446	\$ 11,152,441	87.1%	\$ 13,204,066
Non-certificated benefits	\$ 3,095,036	\$ 1,773,188	\$ 424,456	\$ 215,516	\$ 123,322	\$ 188	\$ 2,536,670	82.0%	\$ 3,027,533
<b>SUB - TOTAL</b>	<b>\$ 61,326,824</b>	<b>\$ 41,830,825</b>	<b>\$ 2,774,493</b>	<b>\$ 1,327,940</b>	<b>\$ 1,749,302</b>	<b>\$ 480,924</b>	<b>\$ 48,163,484</b>	<b>78.5%</b>	<b>\$ 62,051,266</b>
Services, contracts and supplies	\$ 14,666,476	\$ 7,727,501	\$ 3,302,074	\$ 779,797	\$ 262,059	\$ -	\$ 12,071,431	82.3%	\$ 14,286,353
Amortization of supported tangible capital assets	\$ 4,523,100	\$ 28,679	\$ 3,349,028	\$ -	\$ -	\$ -	\$ 3,377,707	74.7%	\$ 5,160,551
Amortization of unsupported tangible capital assets	\$ 999,000	\$ 242,789	\$ 174,266	\$ 267,662	\$ 57,282	\$ -	\$ 742,000	74.3%	\$ 1,098,042
Amortization of supported ARO tangible capital assets	\$ -	\$ -	\$ -	\$ -	\$ -	\$ -	\$ -	0.0%	\$ -
Amortization of unsupported ARO tangible capital assets	\$ 90,879	\$ -	\$ 72,020	\$ -	\$ -	\$ -	\$ 72,020	79.2%	\$ 93,415
Unsupported interest on capital debt	\$ 418,000	\$ 57,572	\$ 75,093	\$ 59,992	\$ 61,961	\$ -	\$ 254,617	60.9%	\$ 373,154
Other interest and finance charges	\$ -	\$ -	\$ -	\$ -	\$ -	\$ -	\$ -	0.0%	\$ -
Losses on disposal of tangible capital assets	\$ -	\$ -	\$ -	\$ -	\$ -	\$ -	\$ -	0.0%	\$ -
Other expense	\$ -	\$ -	\$ -	\$ -	\$ -	\$ -	\$ -	0.0%	\$ -
<b>TOTAL EXPENSES</b>	<b>\$ 82,024,279</b>	<b>\$ 49,887,366</b>	<b>\$ 9,746,975</b>	<b>\$ 2,435,390</b>	<b>\$ 2,130,604</b>	<b>\$ 480,924</b>	<b>\$ 64,681,259</b>	<b>78.9%</b>	<b>\$ 83,062,781</b>
<b>OPERATING SURPLUS (DEFICIT)</b>	<b>\$ (646,878)</b>	<b>\$ 962,214</b>	<b>\$ (522,993)</b>	<b>\$ 104,645</b>	<b>\$ (57,283)</b>	<b>\$ -</b>	<b>\$ 486,584</b>	<b>-75.2%</b>	<b>\$ (876,221)</b>

**ELK ISLAND CATHOLIC SCHOOLS**  
**Statement of Revenues**  
**For the Month Ended May 31, 2024 (Budget Target 75.00%)**

	<u>Spring Approved</u> <u>Budget 2023/24</u>	<u>In Year</u> <u>Adjustments</u>	<u>Budget</u> <u>Update</u> <u>2023/24</u>	<u>Year-to-Date</u> <u>Actual 2023/24</u>	<u>Approved</u> <u>Budget</u> <u>Remaining</u>	<u>% Budget</u> <u>Used</u>
<b>ALBERTA EDUCATION</b>						
<b>BASE INSTRUCTION</b>						
ECS Basic Instruction	\$ 1,170,529	\$ 29,215	\$ 1,199,744	\$ 877,937	\$ 321,807	73.2%
Grades 1-9 Base Instruction	\$ 25,984,710	\$ 915,389	\$ 26,900,099	\$ 19,911,979	\$ 6,988,120	74.0%
Grades 10-12 Base Instruction	\$ 12,965,797	\$ 463,171	\$ 13,428,968	\$ 10,058,522	\$ 3,370,446	74.9%
Home Education	\$ 2,888,358	\$ 320,138	\$ 3,208,496	\$ 2,760,420	\$ 448,076	86.0%
Outreach Funding	\$ 150,000		\$ 150,000	\$ 112,485	\$ 37,515	75.0%
Distance Education	\$ 81,000		\$ 81,000	\$ 62,042	\$ 18,958	76.6%
Rural Small Schools	\$ 1,070,600	\$ (48,930)	\$ 1,021,670	\$ 1,023,786	\$ (2,116)	100.2%
<b>TOTAL BASE INSTRUCTION</b>	<b>\$ 44,310,994</b>	<b>\$ 1,678,983</b>	<b>\$ 45,989,977</b>	<b>\$ 34,807,171</b>	<b>\$ 11,182,806</b>	<b>75.7%</b>
<b>SERVICES &amp; SUPPORT GRANTS</b>						
Specialized Learning Support	\$ 5,196,727	\$ 105,714	\$ 5,302,441	3,974,953	\$ 1,327,488	75.0%
Classroom Complexity	\$ 320,680	\$ 8,710	\$ 329,390	247,009	\$ 82,381	75.0%
Program Unit Funding	\$ 256,575	\$ 17,215	\$ 273,790	211,355	\$ 62,435	77.2%
Kindergarten Severe	\$ 328,515	\$ (20,625)	\$ 307,890	248,331	\$ 59,559	80.7%
Moderate Language Delay Grant	\$ 52,800	\$ 30,800	\$ 83,600	62,692	\$ 20,908	75.0%
First Nations	\$ 562,566	\$ 30,735	\$ 593,301	442,361	\$ 150,940	74.6%
English as a Second Language	\$ 478,236	\$ 78,804	\$ 557,040	420,275	\$ 136,765	75.4%
Refugee Students	\$ 18,150	\$ 6,050	\$ 24,200	18,560	\$ 5,640	76.7%
<b>SUBTOTAL SERVICES &amp; SUPPORT</b>	<b>\$ 7,214,249</b>	<b>\$ 257,403</b>	<b>\$ 7,471,652</b>	<b>\$ 5,625,537</b>	<b>\$ 1,846,115</b>	<b>75.3%</b>
<b>SCHOOL BASED GRANTS</b>						
Operations and Maintenance	\$ 6,581,922	\$ 37,427	\$ 6,619,349	\$ 4,963,096	\$ 1,656,253	75.0%
Infrastructure Maintenance Renewal	\$ 896,472		\$ 896,472	\$ 741,674	\$ 154,798	82.7%
Transportation	\$ 3,164,049	\$ (405,631)	\$ 2,758,418	\$ 2,035,706	\$ 722,712	73.8%
High Speed Internet	\$ 172,800		\$ 172,800	\$ 129,583	\$ 43,217	75.0%
<b>SUBTOTAL SCHOOL BASED GRANTS</b>	<b>\$ 10,815,243</b>	<b>\$ (368,204)</b>	<b>\$ 10,447,039</b>	<b>\$ 7,870,059</b>	<b>\$ 2,576,980</b>	<b>75.3%</b>
<b>COMMUNITY BASED GRANTS</b>						
Socio Economic	\$ 410,379	\$ 9,089	\$ 419,468	\$ 314,990	\$ 104,478	75.1%
Geographic Grant	\$ 549,523	\$ 4,523	\$ 554,046	\$ 415,304	\$ 138,742	75.0%
Nutrition Funding	\$ 199,500	\$ 44,422	\$ 243,922	\$ 186,140	\$ 57,782	76.3%
<b>SUBTOTAL COMMUNITY BASED GRANTS</b>	<b>\$ 1,159,402</b>	<b>\$ 58,034</b>	<b>\$ 1,217,436</b>	<b>\$ 916,433</b>	<b>\$ 301,003</b>	<b>75.3%</b>
<b>JURISDICTION BASED GRANTS</b>						
System Administration	\$ 2,693,292		\$ 2,693,292	\$ 2,019,700	\$ 673,592	75.0%
Teacher Salary Settlement	\$ 1,383,290	\$ (63,300)	\$ 1,319,990	\$ 989,861	\$ 330,129	75.0%
<b>SUBTOTAL JURISDICTION BASED GRANTS</b>	<b>\$ 4,076,582</b>	<b>\$ (63,300)</b>	<b>\$ 4,013,282</b>	<b>\$ 3,009,560</b>	<b>\$ 1,003,722</b>	<b>75.0%</b>
<b>ADDITIONAL ALBERTA GOVERNMENT FUNDING</b>						
Alberta School Council Grant	\$ 8,500		\$ 8,500	\$ -	\$ 8,500	0.0%
Fuel Price Contingency	\$ 75,000		\$ 75,000	\$ 67,204	\$ 7,796	89.6%
Mental Health Grant	\$ 225,073	\$ 59,571	\$ 284,644	\$ 184,096	\$ 100,548	64.7%
Curriculum Implementation	\$ 264,900	\$ 29,912	\$ 294,812	\$ 140,093	\$ 154,719	47.5%
Learning Disruption Grant		\$ 138,180	\$ 138,180	\$ 133,862	\$ 4,318	96.9%
Supplemental Growth Grant		\$ 659,000	\$ 659,000	\$ 494,184	\$ 164,816	75.0%
ATRF Government Contributions	\$ 3,700,000		\$ 3,700,000	\$ 2,565,939	\$ 1,134,061	69.3%
Amortization of Capital	\$ 4,523,100		\$ 4,523,100	\$ 3,377,707	\$ 1,145,393	74.7%
Other Alberta Gov Revenue	\$ (2,788)	\$ 204,529	\$ 201,741	\$ 188,215	\$ 13,526	93.3%
<b>TOTAL ADDITIONAL FUNDING</b>	<b>\$ 8,793,785</b>	<b>\$ 1,091,192</b>	<b>\$ 9,884,977</b>	<b>\$ 7,151,300</b>	<b>\$ 2,733,677</b>	<b>72.3%</b>
<b>TOTAL ALBERTA GOVERNMENT</b>	<b>\$ 76,370,255</b>	<b>\$ 2,654,108</b>	<b>\$ 79,024,363</b>	<b>\$ 59,380,060</b>	<b>\$ 19,644,303</b>	<b>75.1%</b>
<b>OTHER REVENUE</b>						
Federal Government	\$ 138,111	\$ 46,037	\$ 184,148	177,544	\$ 6,604	96.4%
Other Alberta School Authorities	\$ -		\$ -	51,562	\$ (51,562)	0.0%
Fees - Division	\$ 406,250	\$ (111,160)	\$ 295,090	300,237	\$ (5,147)	101.7%
Fees - Transportation	\$ 370,000	\$ 13,265	\$ 383,265	383,117	\$ 148	100.0%
Sales of services and products - Division	\$ 79,141	\$ 195,358	\$ 274,499	339,213	\$ (64,714)	123.6%
Interest and Investment Income	\$ 390,000	\$ 105,000	\$ 495,000	380,849	\$ 114,151	76.9%
Gifts & Donations - Division	\$ 21,000	\$ (21,000)	\$ -	30,000	\$ (30,000)	0.0%
Facility Rentals	\$ 260,000	\$ (65,000)	\$ 195,000	187,666	\$ 7,334	96.2%
Fundraising - Division	\$ -	\$ 20,000	\$ 20,000	-	\$ 20,000	0.0%
External Services	\$ 585,754	\$ (97,792)	\$ 487,962	415,042	\$ 72,920	85.1%
Other Revenue	\$ -	\$ 23,298	\$ 23,298	-	\$ 23,298	0.0%
<b>TOTAL OTHER REVENUE</b>	<b>\$ 2,250,256</b>	<b>\$ 108,006</b>	<b>\$ 2,358,262</b>	<b>\$ 2,270,731</b>	<b>\$ 87,531</b>	<b>96.3%</b>
<b>SCHOOL GENERATED FUNDS</b>						
Fees	\$ 1,730,513	\$ 744,044	\$ 2,474,557	\$ 2,744,544	\$ (269,987)	110.9%
Sales of services and products	\$ 568,503	\$ (220,721)	\$ 347,782	421,450	\$ (73,668)	121.2%
Gifts and Donations	\$ 339,279	\$ (210,994)	\$ 128,285	158,488	\$ (30,203)	123.5%
Fundraising	\$ 118,595	\$ 57,718	\$ 176,313	192,570	\$ (16,257)	109.2%
<b>TOTAL SCHOOL GENERATED FUNDS</b>	<b>\$ 2,756,890</b>	<b>\$ 370,047</b>	<b>\$ 3,126,937</b>	<b>\$ 3,517,052</b>	<b>\$ (390,115)</b>	<b>112%</b>
<b>TOTAL REVENUES</b>	<b>\$ 81,377,401</b>	<b>\$ 3,132,161</b>	<b>\$ 84,509,562</b>	<b>\$ 65,167,843</b>	<b>\$ 19,341,719</b>	<b>77.1%</b>

**ELK ISLAND CATHOLIC SCHOOLS**  
**Statement Of Expenses**  
**For the Month Ended May 31, 2024**  
**Budget Target 75.00% (Schools 90%)**

<u>SCHOOL &amp; DEPARTMENT</u>	<u>Spring Budget</u> <u>2023/24</u>	<u>Budget</u> <u>Update</u> <u>2023/24</u>	<u>Year-to-Date</u> <u>Actual 2023/24</u>	<u>Budget Remaining</u>	<u>% Budget</u> <u>Used</u>
St. Andre Bessette	\$ 3,313,202	\$ 3,411,709	\$ 3,033,232	\$ 378,478	88.9%
St. John Paul II	\$ 2,557,092	\$ 2,668,629	\$ 2,353,406	\$ 315,223	88.2%
Our Lady of Angels	\$ 1,557,734	\$ 1,663,641	\$ 1,440,416	\$ 223,225	86.6%
St. John XXIII	\$ 2,125,740	\$ 2,286,888	\$ 1,958,905	\$ 327,983	85.7%
Our Lady of Perpetual Help	\$ 2,435,608	\$ 2,472,645	\$ 2,214,065	\$ 258,580	89.5%
École Père Kenneth Kearns	\$ 1,657,178	\$ 1,733,338	\$ 1,497,411	\$ 235,927	86.4%
St. Nicholas	\$ 1,676,131	\$ 1,728,694	\$ 1,512,065	\$ 216,630	87.5%
Madonna	\$ 1,808,655	\$ 1,881,882	\$ 1,650,844	\$ 231,038	87.7%
St. Luke	\$ 1,259,668	\$ 1,305,265	\$ 1,149,484	\$ 155,781	88.1%
Holy Redeemer	\$ 1,621,826	\$ 1,749,508	\$ 1,542,801	\$ 206,707	88.2%
Our Lady Of Mount Pleasant	\$ 3,568,849	\$ 3,626,275	\$ 3,247,256	\$ 379,019	89.5%
St Patrick	\$ 2,432,350	\$ 2,508,233	\$ 2,219,913	\$ 288,320	88.5%
St. Martin's	\$ 1,822,964	\$ 1,913,592	\$ 1,687,854	\$ 225,738	88.2%
Holy Spirit	\$ 2,778,917	\$ 2,786,421	\$ 2,456,044	\$ 330,377	88.1%
St. Mary's	\$ 1,574,193	\$ 1,585,747	\$ 1,391,675	\$ 194,073	87.8%
Archbishop Jordan	\$ 7,934,905	\$ 8,178,412	\$ 7,279,615	\$ 898,797	89.0%
St. Theresa	\$ 4,390,736	\$ 4,513,563	\$ 4,027,547	\$ 486,016	89.2%
St. Isidore	\$ 4,302,180	\$ 4,730,532	\$ 4,037,604	\$ 692,928	85.4%
School Generated Funds	\$ 2,732,890	\$ 3,126,936	\$ 2,550,996	\$ 575,940	81.6%
<b>Schools Total</b>	<b>\$ 51,550,818</b>	<b>\$ 53,871,911</b>	<b>\$ 47,251,132</b>	<b>\$ 6,620,778</b>	<b>87.7%</b>
Information Tech	\$ 1,842,291	\$ 1,842,291	\$ 1,343,007	\$ 499,284	72.9%
Inclusive Learning Services	\$ 1,563,206	\$ 1,658,962	\$ 1,269,082	\$ 389,880	76.5%
Student and Staff Formation	\$ 916,078	\$ 1,008,469	\$ 713,250	\$ 295,219	70.7%
Education Excellence	\$ 229,659	\$ 229,659	\$ 183,783	\$ 45,876	80.0%
Secondments/External Services	\$ 585,754	\$ 487,962	\$ 399,828	\$ 88,134	81.9%
ATRF Contributions from Government	\$ 3,700,000	\$ 3,700,000	\$ 2,472,692	\$ 1,227,308	66.8%
System Ins.Support	\$ 3,050,848	\$ 3,595,396	\$ (3,022,977)	\$ 6,618,373	-84.1%
<b>Central Inst. Total</b>	<b>\$ 11,887,836</b>	<b>\$ 12,522,739</b>	<b>\$ 3,358,664</b>	<b>\$ 9,164,075</b>	<b>26.8%</b>
Business Services	\$ 1,164,000	\$ 1,164,000	\$ 795,669	\$ 368,331	68.4%
Board Governance	\$ 400,000	\$ 400,000	\$ 316,237	\$ 83,763	79.1%
Human Resources	\$ 532,383	\$ 532,984	\$ 393,723	\$ 139,261	73.9%
Office of Superintendent	\$ 514,820	\$ 518,212	\$ 383,470	\$ 134,742	74.0%
Capital, Debt Services & IMR	\$ 4,626,979	\$ 5,523,451	\$ 4,351,797	\$ 1,171,654	78.8%
Custodial	\$ 2,755,270	\$ 2,785,270	\$ 2,156,651	\$ 628,619	77.4%
Maintenance	\$ 4,943,124	\$ 3,984,079	\$ 3,238,526	\$ 745,553	81.3%
Transportation	\$ 3,649,049	\$ 3,279,686	\$ 2,435,390	\$ 844,296	74.3%
<b>Support Services</b>	<b>\$ 18,585,625</b>	<b>\$ 18,187,682</b>	<b>\$ 14,071,463</b>	<b>\$ 4,116,219</b>	<b>77.4%</b>
<b>Total Expenditures</b>	<b>\$ 82,024,279</b>	<b>\$ 84,582,332</b>	<b>\$ 64,681,259</b>	<b>\$ 19,901,072</b>	<b>76.5%</b>

**Elk Island Catholic Schools  
Board Governance Expenses  
As of May 31, 2024 (Budget Target 75%)**

Summary	May 2023 Budget	Actuals	Variance (\$ Budget Unspent)	(%) Budget Spent
<b>Honoraria</b>	\$210,638	\$157,979	\$52,659	75.00%
Chair - Annual Honoraria	33,350	25,013	8,338	75.00%
Vice Chair - Annual Honoraria	29,348	22,011	7,337	75.00%
Trustee - Annual Honoraria	26,680	20,010	6,670	75.00%
<b>Employee Benefits</b>	42,907	31,038	11,869	72.34%
<b>Travel Amount</b>				
Al Stewart	500	375	125	75.00%
Shelley Charchun	500	375	125	75.00%
Teresa Makowecki	500	375	125	75.00%
<b>Trustee Professional Development (Policy 7: Section 3 &amp; Appendix A)</b>				
Al Stewart	3,000	1,901	1,099	63.37%
Jean Boisvert	3,000	1,094	1,906	36.45%
Le-Ann Ewaskiw	3,000	825	2,175	27.51%
Dean Sarnecki	3,000	1,064	1,936	35.45%
Shelley Charchun	3,000	1,014	1,986	33.78%
Ted Paszek	3,000	1,852	1,148	61.75%
Teresa Makowecki	3,000	736	2,264	24.53%
<b>Trustee Other Expenses (Policy 7: Section 4 &amp; Appendix A)</b>				
Al Stewart	1,700	947	753	55.72%
Jean Boisvert	1,700	738	962	43.41%
Le-Ann Ewaskiw	1,700	393	1,307	23.14%
Dean Sarnecki	1,700	50	1,650	2.94%
Shelley Charchun	2,700	1,216	1,484	45.04%
Ted Paszek	1,700	365	1,335	21.49%
Teresa Makowecki	2,700	-	2,700	0.00%
<b>Contracted Services</b>	1,200	800	400	66.67%
<b>Board Expenses (Policy 7: Sections 5, 7, 8 &amp; Appendix A)</b>				
Board Public Relations (Section 7)	22,455	1,791	1,307	5.82%
Meeting Meal Expenses (Section 8.1)		2,665		
Board Retreats (8.3)		4,707		
ACSTA AGM (Policy 7 - Appendix A)		7,206		
ASBA Representative (Section 4.2 - AGM & SGM)		686		
Other General Misc Expenses (Section 8.4)		4,094		
Election Advertising Costs (Section 8.2)				
<b>Membership Fees (Policy 7: Section 9)</b>				
ACSTA	40,000	37,777	(5,551)	94.44%
ASBA	42,000	49,356		117.51%
ASBA Zone 2/3	1,450	1,450		100.00%
Rural Caucus	600	672		112.01%
Alberta School Council Association	1,450	1,800		124.14%
Chamber of Commerce Memberships	900	896		99.59%
<b>TOTAL BOARD GOVERNANCE</b>	<b>\$400,000</b>	<b>\$316,237</b>		<b>\$83,763</b>

\*\*Note: Trustees from Camrose and Vegreville have higher budgets to cover additional travels costs.

2023/2024 Trustee Expenses  
Jean Boisvert (Trustee)  
As of May 31, 2024 (Budget Target 75%)

<u>Description</u>	<u>Budget</u>	<u>Actuals</u>	<u>Variance</u>
Trustee Professional Development (Policy 7, 3 & Appendix A)	\$ 3,000		
Dec-23 St. Joseph College Alumni Event		\$ 30	
Apr-24 CCSTA June Conference Registration		\$ 1,014	
May-24 GrACE Summit		\$ 50	
<i>Subtotals</i>	<u>\$ 3,000</u>	<u>\$ 1,094</u>	<u>\$ 1,906</u>
Trustee Other Expenses (Policy 7, 4 & Appendix A)	\$ 1,700		
Dec-23 Sherwood Park Chamber Luncheon		\$ 41	
Dec-23 Mileage: Meetings (ASBA, October Public Meeting)		\$ 194	
Jan-24 Luncheon: Sherwood Park Chamber of Commerce		\$ 41	
Mar-24 Mileage: Meetings (ASBA, Rural Caucus, Board Meeting)		\$ 246	
Apr-24 St. Joseph College Breakfast		\$ 50	
May-24 Chamber Lunch with Mayor Katchur		\$ 51	
May-24 Chamber Forum		\$ 10	
May-24 Mileage: Meetings (ASBA, Chamber, St. Joseph College)		\$ 105	
<i>Subtotals</i>	<u>\$ 1,700</u>	<u>\$ 738</u>	<u>\$ 962</u>
<b>Totals</b>	<u><u>\$ 4,700</u></u>	<u><u>\$ 1,832</u></u>	<u><u>\$ 2,868</u></u>

2023/2024 Trustee Expenses  
 Ted Paszek (Vice Chair)  
 As of May 31, 2024 (Budget Target 75%)

<u>Description</u>	<u>Budget</u>	<u>Actuals</u>	<u>Variance</u>
Trustee Professional Development (Policy 7, 3 & Appendix A)	\$ 3,000		
Dec-23 ASBA Conference Expenses		\$ 789	
Apr-24 CCSTA June Conference Registration		\$ 1,014	
May-24 GrACE Summit		\$ 50	
<i>Subtotal</i>	<u>\$ 3,000</u>	<u>\$ 1,852</u>	<u>\$ 1,148</u>
Trustee Other Expenses (Policy 7, 4 & Appendix A)	\$ 1,700		
Dec-23 Mileage: Meetings (ASBA, October Public Meeting)		203	
Apr-24 St. Joseph College Breakfast		50	
Apr-24 Mileage: March Board Meeting		112	
<i>Subtotal</i>	<u>\$ 1,700</u>	<u>\$ 365</u>	<u>\$ 1,335</u>
<b>Totals</b>	<u><b>\$ 4,700</b></u>	<u><b>\$ 2,218</b></u>	<u><b>\$ 2,482</b></u>



2023/2024 Trustee Expenses  
 Le-Ann Ewaskiw (Board Chair)  
 As of May 31, 2024 (Budget Target 75%)

<u>Description</u>	<u>Budget</u>	<u>Actuals</u>	<u>Variance</u>
Trustee Professional Development (Policy 7, 3 & Appendix A)	\$ 3,000		
ASBA FGM Expenses		\$ 139	
ASBA FGM Conference Fee		\$ 686	
<i>Subtotal</i>	\$ 3,000	\$ 825	\$ 2,175
Trustee Other Expenses (Policy 7, 4 & Appendix A)	\$ 1,700		
October Mileage		\$ 214	
Mar-24 Mileage: (Board Meetings, Value Scoping)		\$ 179	
<i>Subtotals</i>	\$ 1,700	\$ 393	\$ 1,307
<b>Totals</b>	<b>\$ 4,700</b>	<b>\$ 1,219</b>	<b>\$ 3,481</b>

2023/2024 Trustee Expenses  
 Dean Sarnecki (Trustee)  
 As of May 31, 2024 (Budget Target 75%)

<u>Description</u>	<u>Budget</u>	<u>Actuals</u>	<u>Variance</u>
Trustee Professional Development (Policy 7, 3 & Appendix A)	\$ 3,000		
Apr-24 CCSTA June Conference Registration		\$ 1,014	
May-24 GrACE Summit		\$ 50	
<i>Subtotal</i>	<u>\$ 3,000</u>	<u>\$ 1,064</u>	<u>\$ 1,936</u>
Trustee Other Expenses (Policy 7, 4 & Appendix A)	\$ 1,700		
Apr-24 St. Joseph College Breakfast		50	
<i>Subtotal</i>	<u>\$ 1,700</u>	<u>\$ 50</u>	<u>\$ 1,650</u>
<b>Totals</b>	<u><u>\$ 4,700</u></u>	<u><u>\$ 1,114</u></u>	<u><u>\$ 3,586</u></u>

2023/2024 Trustee Expenses  
 Al Stewart (Trustee)  
 As of May 31, 2024 (Budget Target 75%)

<u>Description</u>	<u>Budget</u>	<u>Actuals</u>	<u>Variance</u>
Trustee Professional Development (Policy 7, 3 & Appendix A)	\$ 3,000		
Dec-23 ASBA FGM Conference Registration & Expenses		\$ 739	
Feb-24 ACSTA Symposium		\$ 99	
Apr-24 CCSTA June Conference Registration		\$ 1,014	
May-24 GrACE Summit		\$ 50	
<i>Subtotal</i>	<u>\$ 3,000</u>	<u>\$ 1,901</u>	<u>\$ 1,099</u>
Trustee Other Expenses (Policy 7, 4 & Appendix A)	\$ 1,700		
Nov-23 October Mileage		\$ 297	
Dec-23 Mileage: Meetings (ASBA, Board Meeting)		\$ 49	
Jan-24 Mileage: December Board Meeting		\$ 25	
Feb-24 Mileage: Meetings (Advocacy, Symposium, Board Meeting)		\$ 195	
Mar-24 Mileage: Meetings (PD, Board Meeting)		\$ 135	
Apr-24 Mileage: (School Visits, Board Meetings, MLA Meeting)		\$ 123	
May-24 Mileage: (Board Meeting, ASBA, Mass)		\$ 122	
<i>Subtotal</i>	<u>\$ 1,700</u>	<u>\$ 947</u>	<u>\$ 753</u>
<b>Totals</b>	<u><u>\$ 4,700</u></u>	<u><u>\$ 2,848</u></u>	<u><u>\$ 1,852</u></u>

2023/2024 Trustee Expenses  
Teresa Makowecki (Trustee)  
As of May 31, 2024 (Budget Target 75%)

<u>Description</u>	<u>Budget</u>	<u>Actuals</u>	<u>Variance</u>
Trustee Professional Development (Policy 7, 3 & Appendix A)	\$ 3,000		
Dec-23 ASBA FGM Conference Fee		\$ 686	
May-24 GrACE Summit		\$ 50	
<i>Subtotal</i>	<u>\$ 3,000</u>	<u>\$ 736</u>	<u>\$ 2,264</u>
Trustee Other Expenses (Policy 7, 4 & Appendix A)	\$ 2,700		
<i>Subtotal</i>	<u>\$ 2,700</u>	<u>\$ -</u>	<u>\$ 2,700</u>
<b>Totals</b>	<u><u>\$ 5,700</u></u>	<u><u>\$ 736</u></u>	<u><u>\$ 4,964</u></u>

2023/2024 Trustee Expenses  
 Shelley Charchun (Trustee)  
 As of May 31, 2024 (Budget Target 75%)

<u>Description</u>	<u>Budget</u>	<u>Actuals</u>	<u>Variance</u>
Trustee Professional Development (Policy 7, 3 & Appendix A)	\$ 3,000		
Apr-24 CCSTA June Conference Registration		1014	
<i>Subtotal</i>	<u>\$ 3,000</u>	<u>\$ 1,014</u>	<u>\$ 1,986</u>
Trustee Other Expenses (Policy 7, 4 & Appendix A)	\$ 2,700		
Sep-23 Mileage: September Board Meeting		\$ 91	
Oct-23 Mileage: October Board Meeting / Retreat		\$ 153	
Dec-23 Mileage: November/December Board Meeting		\$ 203	
Feb-24 Mileage: GrACE Meeting		\$ 92	
Feb-24 Mileage: Advocacy Meetings February Board Meeting		\$ 184	
Mar-24 Mileage: (PD Day, Board Meeting)		\$ 213	
May-24 Mileage: (Board Meeting, ACSTA MLA, Assurance)		\$ 279	
<i>Subtotal</i>	<u>\$ 2,700</u>	<u>\$ 1,216</u>	<u>\$ 1,484</u>
<b>Totals</b>	<u><u>\$ 5,700</u></u>	<u><u>\$ 2,230</u></u>	<u><u>\$ 3,470</u></u>



ALBERTA

EDUCATION  
*Office of the Minister*

**GOVERNMENT OF ALBERTA**  
**DEPARTMENT OF EDUCATION**  
**MINISTERIAL ORDER (#007/2024)**

I, Demetrios Nicolaides, Minister of Education, pursuant to Sections 107 and 108 of the *Education Act*, make the Order in the attached Appendix, being The Imperial Roman Catholic Separate School District No. 781 Establishment Order.

DATED at Calgary, Alberta May 24, 2024.

**MINISTER OF EDUCATION**

**APPENDIX**

**MINISTERIAL ORDER (#007/2024)**

**EDUCATION ACT**

**The Imperial Roman Catholic Separate School District No. 781 Establishment Order**

- 1 Pursuant to Sections 107 and 108 of the *Education Act*, The Imperial Roman Catholic Separate School District No. 781 is established.
  
- 2 The Imperial Roman Catholic Separate School District No. 781 shall be comprised of the following school districts which are properly assessable for separate school purposes under the provision of Sections 153 to 160 of the *Education Act*:

The Imperial School District No. 893

The Mayflower School District No. 1560

The Pleasant Ridge School District No. 3065

- 3 The Imperial Roman Catholic Separate School District No. 781 shall be comprised of the following lands:

Township 50, Range 13, West of the 4<sup>th</sup> Meridian

Sections 17 to 20 inclusive; Sections 30 and 31; South half and Northwest quarter of Section 29; West half of Section 32.

Township 50, Range 14, West of the 4<sup>th</sup> Meridian

Sections 13 to 36 inclusive.

Township 51, Range 14, West of the 4<sup>th</sup> Meridian

Sections 2 to 5 inclusive; Sections 8 to 11 inclusive; Sections 15 and 16; North half and Southwest quarter of Section 14; South half and Northeast quarter of Section 17.

- 4 This Order shall be effective September 1, 2024.



ALBERTA

---

EDUCATION  
*Office of the Minister*

**GOVERNMENT OF ALBERTA**  
**DEPARTMENT OF EDUCATION**  
**MINISTERIAL ORDER (#008/2024)**

I, Demetrios Nicolaides, Minister of Education, pursuant to Section 114 of the *Education Act*, make the Order in the attached Appendix, being The Elk Island Catholic Separate School Division) Boundary Adjustment Order.

DATED at Calgary, Alberta May 24, 2024.

**Demetrios Nicolaides**

---

**MINISTER OF EDUCATION**



**APPENDIX**

**MINISTERIAL ORDER (#008/2024)**

**EDUCATION ACT**

**The Elk Island Catholic Separate School Division  
Boundary Adjustment Order**

- 1 Pursuant to Section 114 of the *Education Act*, all of the lands are taken from the following school district and are added to The Elk Island Catholic Separate School Division:

The Imperial Roman Catholic Separate School District No. 781

- 2 Pursuant to Section 114 of the *Education Act*, the following school district is dissolved:

The Imperial Roman Catholic Separate School District No. 781

- 3 The Elk Island Catholic Separate School Division shall be comprised of the following lands:

Township 46, Range 20, West of the 4<sup>th</sup> Meridian

Sections 22, 27, 28, and 29; Sections 32 to 35 inclusive; North halves of Sections 15 and 26; That portion of the North half of Section 16 lying South and East of the Southeast limits of The Canadian National right-of-way as shown on Plan 337 T.R.; North half and Southeast quarter of Section 21; West half of Section 36 and that portion of the Southeast quarter of Section 36 lying South of Highway 13; Those portions of the North half of Section 25 lying South and West of Highway 13; Northeast quarter of Section 31.

Township 47, Range 18, West of the 4<sup>th</sup> Meridian

Sections 14 to 16 inclusive; Sections 20 to 23 inclusive; Sections 26 to 29 inclusive; Sections 33 to 35 inclusive; North half and Southeast quarter of Section 17; Southeast quarter of Section 32.

Township 47, Range 20, West of the 4<sup>th</sup> Meridian

Sections 1 to 3 inclusive; South half and Northeast quarter of Section 4; South half of Sections 10 and 11; Southeast quarter of Sections 5 and 9; That portion of the North half of Section 11 as described legally in certificates of title 762-160-396 and 762-160-397.

**APPENDIX**

**MINISTERIAL ORDER (#008/2024)**

Township 50, Range 12, West of the 4<sup>th</sup> Meridian  
Sections 16 to 21 inclusive; Sections 28 to 33 inclusive.

Township 50, Range 13, West of the 4<sup>th</sup> Meridian  
Sections 13 to 36 inclusive.

Township 50, Range 14, West of the 4<sup>th</sup> Meridian  
Sections 13 to 36 inclusive.

Township 50, Range 16, West of the 4<sup>th</sup> Meridian  
Sections 31 to 33 inclusive; Northwest quarter of Section 28; Northeast quarter of Section 30.

Township 50, Range 17, West of the 4<sup>th</sup> Meridian  
Section 36.

Township 50, Range 19, West of the 4<sup>th</sup> Meridian  
Sections 31 and 32.

Township 50, Range 20, West of the 4<sup>th</sup> Meridian  
Sections 35 and 36; East half of Section 34.

Township 50, Range 21, West of the 4<sup>th</sup> Meridian  
Sections 6 to 9 inclusive; Sections 16 to 21 inclusive; Sections 29 to 31 inclusive; Those portions of Sections 32, 33, and 34 lying North of The Ministik Lake.

Township 50, Range 22, West of the 4<sup>th</sup> Meridian  
Sections 7 and 8; Sections 11 to 29 inclusive; Sections 31 to 36 inclusive; North halves and Southeast quarters of Sections 6 and 30; North half and Southwest quarter of Section 9; West half of Section 5.

Township 50, Range 23, West of the 4<sup>th</sup> Meridian  
Sections 12 and 13; East halves of Sections 11 and 14; Southeast quarter of Section 24.

Township 51, Range 12, West of the 4<sup>th</sup> Meridian  
South half of Section 5.

Township 51, Range 13, West of the 4<sup>th</sup> Meridian  
Sections 3 to 10 inclusive; Sections 15 to 22 inclusive; Sections 27 to 34 inclusive; South half and Northwest quarter of Section 2; West halves of Sections 11, 14, 23, 26, and 35.

**APPENDIX**

**MINISTERIAL ORDER (#008/2024)**

Township 51, Range 14, West of the 4<sup>th</sup> Meridian  
Sections 1 to 36 inclusive.

Township 51, Range 15, West of the 4<sup>th</sup> Meridian  
Sections 1 to 4 inclusive; Sections 9 to 28 inclusive; Sections 33 to 36 inclusive; South half and Northeast quarter of Section 29; South half of Section 30.

Township 51, Range 16, West of the 4<sup>th</sup> Meridian  
Sections 3 to 10 inclusive; Sections 13 to 22 inclusive; Section 24; South half of Section 25; Northeast quarter of Section 23.

Township 51, Range 19, West of the 4<sup>th</sup> Meridian  
Sections 4 to 9 inclusive; Sections 16 to 21 inclusive; Sections 29 to 32 inclusive; West halves of Sections 28 and 33.

Township 51, Range 20, West of the 4<sup>th</sup> Meridian  
Sections 1 to 36 inclusive.

Township 51, Range 21, West of the 4<sup>th</sup> Meridian  
Sections 1 to 36 inclusive.

Township 51, Range 22, West of the 4<sup>th</sup> Meridian  
Sections 1 to 36 inclusive.

Township 51, Range 23, West of the 4<sup>th</sup> Meridian  
Sections 1 to 4 inclusive; Sections 9 to 16 inclusive; Sections 21 to 28 inclusive; Sections 33 to 36 inclusive.

Township 52, Range 13, West of the 4<sup>th</sup> Meridian  
Sections 3 to 9 inclusive; Sections 16 to 21 inclusive; West halves of Sections 30 and 31.

Township 52, Range 14, West of the 4<sup>th</sup> Meridian  
Sections 1 to 36 inclusive.

Township 52, Range 15, West of the 4<sup>th</sup> Meridian  
Sections 1 to 3 inclusive; Sections 10 to 13 inclusive; Sections 23 to 25 inclusive; Section 36; The East half and Northwest quarter of Section 35; East halves of Sections 4, 14, and 26; Southeast quarter of Section 9.

Township 52, Range 20, West of the 4<sup>th</sup> Meridian  
Sections 4 to 8 inclusive; South half of Section 3.

**APPENDIX**

**MINISTERIAL ORDER (#008/2024)**

Township 52, Range 21, West of the 4<sup>th</sup> Meridian  
Sections 1 to 36 inclusive.

Township 52, Range 22, West of the 4<sup>th</sup> Meridian  
Sections 1 to 36 inclusive.

Township 52, Range 23, West of the 4<sup>th</sup> Meridian  
Sections 1 to 4 inclusive; Sections 9 to 16 inclusive; Sections 21 to 28 inclusive;  
Sections 31 to 36 inclusive; Those portions of Sections 29 and 30 lying North of  
Highway 14.

Township 53, Range 14, West of the 4<sup>th</sup> Meridian  
Sections 1 to 24 inclusive; Sections 29 to 32 inclusive.

Township 53, Range 15, West of the 4<sup>th</sup> Meridian  
Sections 1 to 36 inclusive.

Township 53, Range 18, West of the 4<sup>th</sup> Meridian  
Sections 1 to 12 inclusive; Sections 14 to 23 inclusive; Sections 27 to 30 inclusive;  
Sections 32 and 34; West half of Section 26; East half of Section 31; South half of  
Section 33; Southwest quarter of Section 35.

Township 53, Range 19, West of the 4<sup>th</sup> Meridian  
Sections 1 to 4 inclusive; Sections 9 to 15 inclusive; Sections 22 to 27 inclusive;  
Southeast quarter of Section 16.

Township 53, Range 21, West of the 4<sup>th</sup> Meridian  
Sections 1 to 30 inclusive; Sections 32 to 36 inclusive; Northeast quarter and South half  
of Section 31.

Township 53, Range 22, West of the 4<sup>th</sup> Meridian  
Sections 1 to 29 inclusive; Sections 32 to 35 inclusive; East halves of Sections 30 and 31;  
West half of Section 36.

Township 53, Range 23, West of the 4<sup>th</sup> Meridian  
Sections 1 to 5 inclusive; Sections 8 to 14 inclusive; Sections 23 and 24; Those portions  
of Sections 6 and 7 lying South and East of The North Saskatchewan River.

Township 53, Range 24, West of the 4<sup>th</sup> Meridian  
That portion of Section 1 lying outside The City of Edmonton.

**APPENDIX**

**MINISTERIAL ORDER (#008/2024)**

Township 54, Range 14, West of the 4<sup>th</sup> Meridian

Sections 5 to 8 inclusive; Sections 15 to 22 inclusive; Sections 26 to 28 inclusive; Sections 33 to 35 inclusive; West halves of Sections 25 and 36; East half of Section 29.

Township 54, Range 15, West of the 4<sup>th</sup> Meridian

Sections 1 to 34 inclusive; South half and Northwest quarter of Section 35; Southwest quarter of Section 36.

Township 54, Range 16, West of the 4<sup>th</sup> Meridian

Sections 19 to 21 inclusive; Sections 28 to 33 inclusive; North halves of Sections 16 to 18 inclusive.

Township 54, Range 17, West of the 4<sup>th</sup> Meridian

Sections 24, 25, and 36; North half of Section 13.

Township 54, Range 18, West of the 4<sup>th</sup> Meridian

Sections 18 to 21 inclusive; Sections 28 to 33 inclusive.

Township 54, Range 19, West of the 4<sup>th</sup> Meridian

Sections 24, 25, and 36; North half of Section 13; East half of Section 26.

Township 54, Range 20, West of the 4<sup>th</sup> Meridian

Sections 6 and 7; West half of Section 18.

Township 54, Range 21, West of the 4<sup>th</sup> Meridian

Sections 1 to 4 inclusive; Sections 10 to 16 inclusive; Section 23; Northeast quarter and South half of Sections 5 and 9; South halves of Sections 21 and 22; West half of Section 24.

Township 54, Range 22, West of the 4<sup>th</sup> Meridian

Sections 3 to 5 inclusive; Sections 8 to 10 inclusive; Sections 15 to 22 inclusive; Sections 28 to 33 inclusive lying outside of The North Saskatchewan River; East half of Section 6; North half and Southeast quarter of Section 7; Southwest quarter of Section 27.

Township 54, Range 23, West of the 4<sup>th</sup> Meridian

Sections 13, 24, 26, 35, and 36; Sections 23 and 25 lying outside of The North Saskatchewan River; That portion of the East half of Section 14 lying East of the right bank of The North Saskatchewan River.

**APPENDIX**

**MINISTERIAL ORDER (#008/2024)**

Township 55, Range 13, West of the 4<sup>th</sup> Meridian

Sections 18 and 19; Sections 30 and 31; North half of Section 7; West halves of Sections 17, 20, and 29; Northwest quarter of Section 8; Southwest quarter of Section 32.

Township 55, Range 14, West of the 4<sup>th</sup> Meridian

Sections 1 to 3 inclusive; Sections 10 to 36 inclusive; North half and Southeast quarter of Section 9; East half of Section 4; Northwest quarter of Section 7.

Township 55, Range 15, West of the 4<sup>th</sup> Meridian

Sections 2 to 5 inclusive; Sections 8 to 36 inclusive; Northwest quarter of Section 1.

Township 55, Range 16, West of the 4<sup>th</sup> Meridian

Sections 4 to 6 inclusive; South half and Northwest quarter of Section 3; West half of Section 2.

Township 55, Range 18, West of the 4<sup>th</sup> Meridian

Sections 3 to 5 inclusive; Sections 9 and 16; South half of Section 6; East halves of Sections 8 and 17; Southwest quarter of Section 10.

Township 55, Range 20, West of the 4<sup>th</sup> Meridian

Sections 25 to 29 inclusive; Sections 32 to 36 inclusive; North half and Southwest quarter of Section 21; North half of Section 24.

Township 55, Range 21, West of the 4<sup>th</sup> Meridian

Sections 19 to 22 inclusive; Sections 27 to 30 inclusive; Sections 32 to 34 inclusive; North halves of Sections 15 to 17 inclusive; Northeast quarter of Section 18; That portion of Section 31 lying East of The North Saskatchewan River.

Township 55, Range 22, West of the 4<sup>th</sup> Meridian

Sections 1 to 3 inclusive; Sections 5 to 8 inclusive; Sections 11 to 13 inclusive; Sections 16 to 21 inclusive; Section 24; Sections 29 to 31 inclusive; West half of Section 28; Southwest quarter of Section 32; Those portions of Sections 4, 9, 10, and 15 lying outside of The North Saskatchewan River; Those portions of 14, 23, 25, 26, and 36 lying South and East of The North Saskatchewan River; Those portions of Sections 14 and 22 lying within The Fort Saskatchewan Settlement.

Township 55, Range 23, West of the 4<sup>th</sup> Meridian

Sections 1 to 4 inclusive; Sections 9 to 16 inclusive; Sections 23 and 24; South half and Northeast quarter of Section 25.

**APPENDIX**

**MINISTERIAL ORDER (#008/2024)**

Township 56, Range 14, West of the 4<sup>th</sup> Meridian

Sections 2 to 11 inclusive; Sections 14 to 23 inclusive; Sections 30 and 31; North half and Southwest quarter of Section 29; East half of Section 28; South half of Section 27; Southwest quarters of Sections 1 and 32.

Township 56, Range 15, West of the 4<sup>th</sup> Meridian

Sections 1 to 18 inclusive; Sections 21 to 28 inclusive; Sections 33 to 36 inclusive; East half of Section 20.

Township 56, Range 16, West of the 4<sup>th</sup> Meridian

Sections 4 and 5; Sections 7 to 10 inclusive; Sections 13 to 18 inclusive; Section 23; North halves and Southwest quarters of Sections 3 and 11; North half and Southeast quarter of Section 6; North half of Section 12; South halves of Sections 19 to 22 inclusive; Northwest quarter of Section 2.

Township 56, Range 17, West of the 4<sup>th</sup> Meridian

North half and Southeast quarter of Section 12; South half and Northeast quarter of Section 13.

Township 56, Range 20, West of the 4<sup>th</sup> Meridian

Sections 2 to 5 inclusive; Sections 8 to 10 inclusive; Sections 15 to 17 inclusive; South half and Northwest quarter of Section 1; West halves of Sections 11 and 14; South half of Section 20; Southwest quarter of Section 21.

Township 57, Range 14, West of the 4<sup>th</sup> Meridian

South half and Northwest quarter of Section 6; Southwest quarter of Section 7.

Township 57, Range 15, West of the 4<sup>th</sup> Meridian

Section 1; South half and Northeast quarter of Section 2; Southeast quarter of Section 12.

4 This Order shall be effective September 1, 2024.



ALBERTA

EDUCATION  
*Office of the Minister*

**GOVERNMENT OF ALBERTA**  
**DEPARTMENT OF EDUCATION**  
**MINISTERIAL ORDER (#009/2024)**

I, Demetrios Nicolaides, Minister of Education, pursuant to Section 114 of the *Education Act*, make the Order in the attached Appendix, being The Vegreville School District No. 1480 (The Elk Island School Division) Boundary Adjustment Order.

DATED at **Calgary**, Alberta **May 24**, 2024.

**Demetrios Nicolaides**

**MINISTER OF EDUCATION**



**APPENDIX**

**MINISTERIAL ORDER (#009/2024)**

**EDUCATION ACT**

**The Vegreville School District No. 1480  
(The Elk Island School Division)  
Boundary Adjustment Order**

- 1 Pursuant to Section 114 of the *Education Act*, all of the lands are taken from the following school districts and added to The Vegreville School District No. 1480:

The Imperial School District No. 893

The Mayflower School District No. 1560

The Pleasant Ridge School District No. 3065

- 2 Pursuant to Section 114 of the *Education Act*, the following school districts are dissolved:

The Imperial School District No. 893

The Mayflower School District No. 1560

The Pleasant Ridge School District No. 3065

- 3 The Vegreville School District No. 1480 shall be comprised of the following lands:

Township 50, Range 12, West of the 4<sup>th</sup> Meridian  
Sections 16 to 21 inclusive; Sections 28 to 33 inclusive.

Township 50, Range 13, West of the 4<sup>th</sup> Meridian  
Sections 13 to 36 inclusive.

Township 50, Range 14, West of the 4<sup>th</sup> Meridian  
Sections 13 to 36 inclusive.

Township 51, Range 12, West of the 4<sup>th</sup> Meridian  
South half of Section 5.

**APPENDIX**

**MINISTERIAL ORDER (#009/2024)**

Township 51, Range 13, West of the 4<sup>th</sup> Meridian

Sections 3 to 10 inclusive; Sections 15 to 22 inclusive; Sections 27 to 34 inclusive; South half and Northwest quarter of Section 2; West halves of Sections 11, 14, 23, 26, and 35.

Township 51, Range 14, West of the 4<sup>th</sup> Meridian

Sections 1 to 36 inclusive.

Township 51, Range 15, West of the 4<sup>th</sup> Meridian

Sections 1 to 4 inclusive; Sections 9 to 28 inclusive; Sections 33 to 36 inclusive; South half and Northeast quarter of Section 29; South half of Section 30.

Township 51, Range 16, West of the 4<sup>th</sup> Meridian

Sections 13, 14, and 24; South half of Section 25; Northeast quarter of Section 23.

Township 52, Range 13, West of the 4<sup>th</sup> Meridian

Sections 3 to 9 inclusive; Sections 16 to 21 inclusive; West halves of Sections 30 and 31.

Township 52, Range 14, West of the 4<sup>th</sup> Meridian

Sections 1 to 36 inclusive.

Township 52, Range 15, West of the 4<sup>th</sup> Meridian

Sections 1 to 3 inclusive; Sections 10 to 13 inclusive; Sections 23 to 25 inclusive; Section 36; East half and Northwest quarter of Section 35; East halves of Sections 4, 14, and 26; Southeast quarter of Section 9.

Township 53, Range 14, West of the 4<sup>th</sup> Meridian

Sections 1 to 24 inclusive; Sections 29 to 32 inclusive.

Township 53, Range 15, West of the 4<sup>th</sup> Meridian

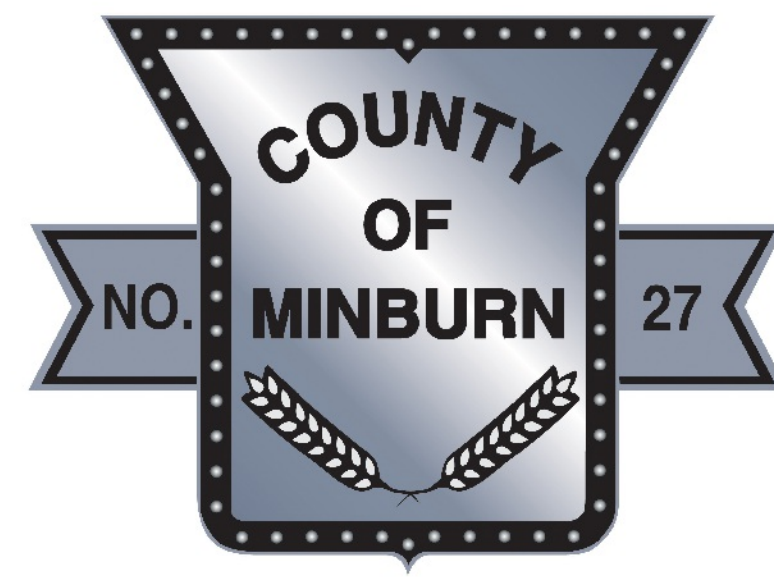
Sections 1 to 36 inclusive.

Township 54, Range 14, West of the 4<sup>th</sup> Meridian

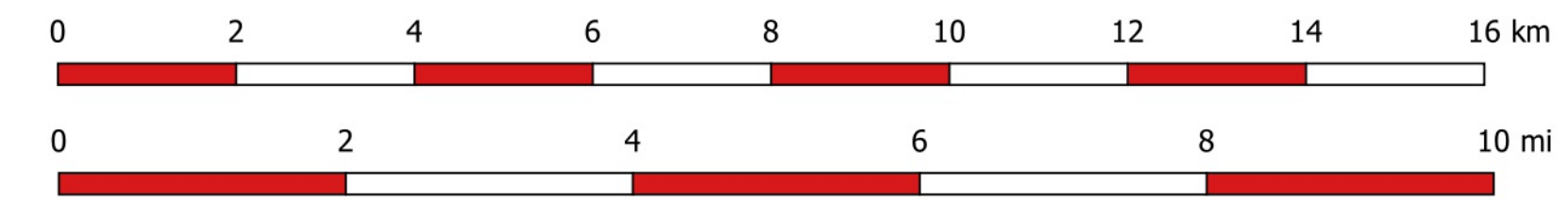
Sections 5 to 8 inclusive.

Township 54, Range 15, West of the 4<sup>th</sup> Meridian

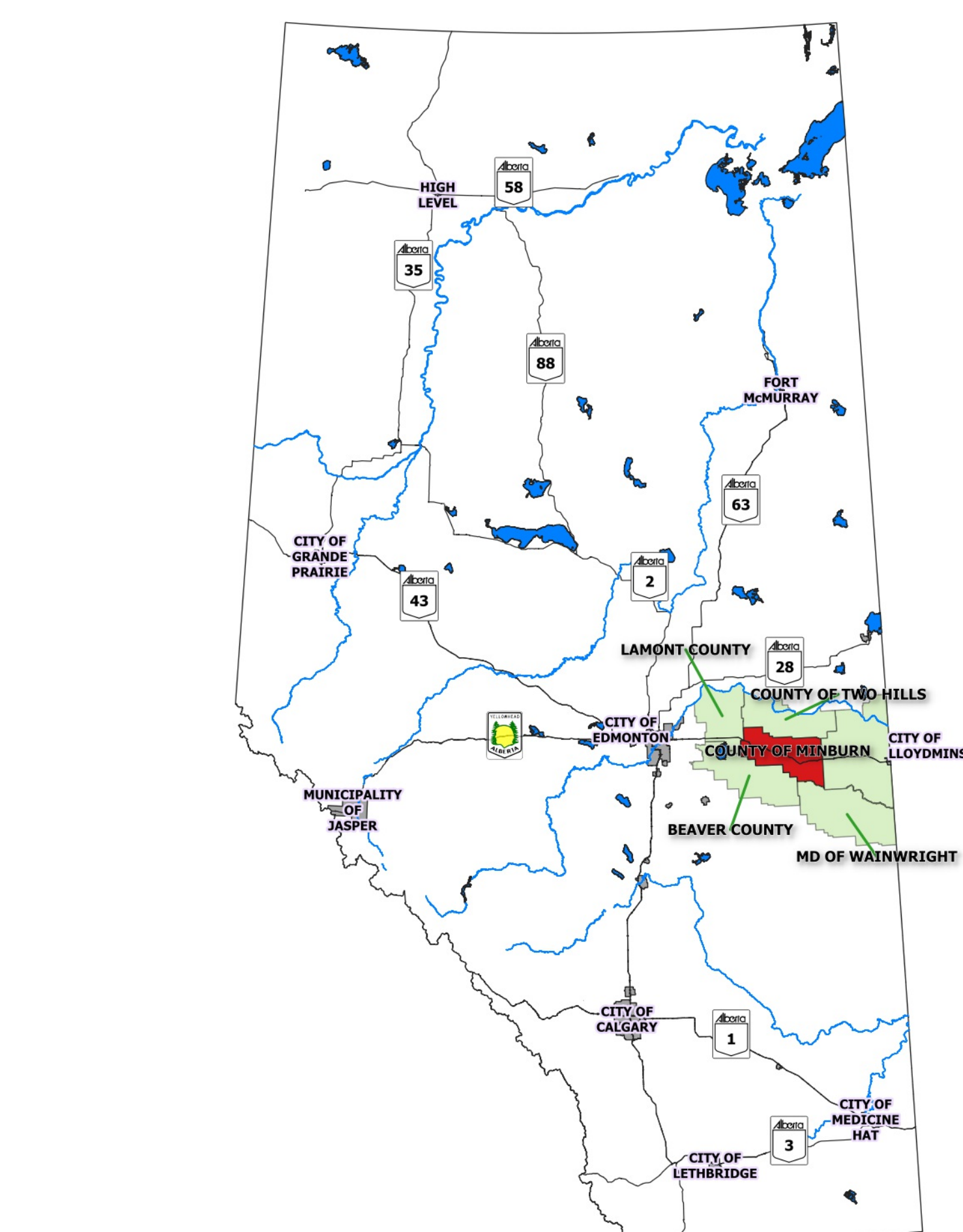
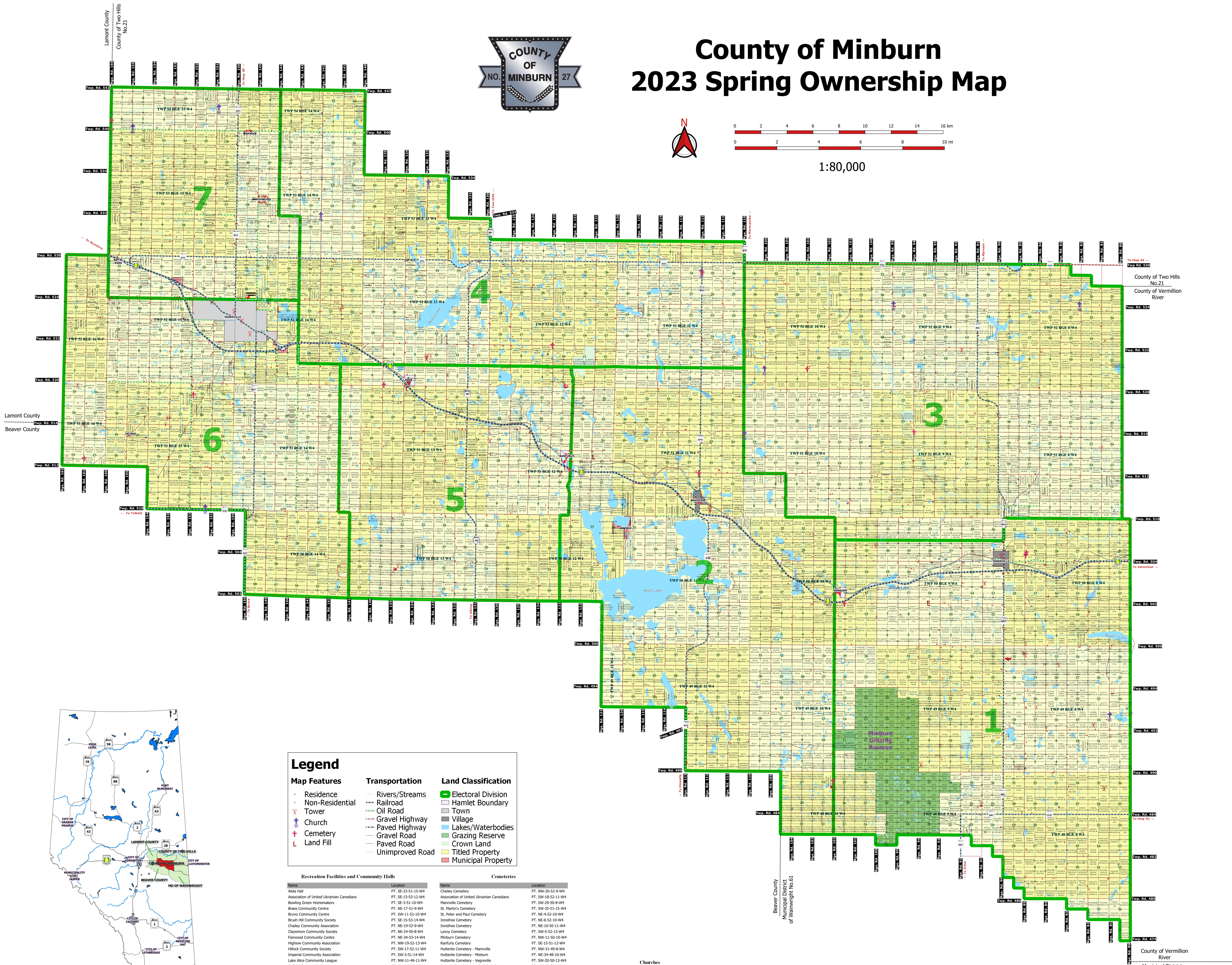
Sections 1 to 12 inclusive.



# County of Minburn 2023 Spring Ownership Map



1:80,000



### Legend

<b>Map Features</b>	<b>Transportation</b>	<b>Land Classification</b>
• Residence	— Rivers/Streams	— Electoral Division
• Non-Residential	— Railroad	— Hamlet Boundary
• Tower	— Oil Road	— Town
• Church	— Gravel Highway	— Village
• Cemetery	— Paved Highway	— Lakes/Waterbodies
• Land Fill	— Gravel Road	— Grazing Reserve
	— Paved Road	— Crown Land
	— Unimproved Road	— Titled Property
		— Municipal Property

Recreation Facilities and Community Halls		Cemeteries	
Name	Location	Name	Location
Alida Hall	PT. SE-33-51-15-W4	Challey Cemetery	PT. NW-20-52-9-W4
Association of United Ukrainian Canadians	PT. SE-13-53-12-W4	Association of United Ukrainian Canadians	PT. SW-18-52-11-W4
Bowling Green Homeowners	PT. SE-3-53-10-W4	Marmville Cemetery	PT. SW-29-50-8-W4
Braes Community Centre	PT. NE-17-51-9-W4	St. Martin's Cemetery	PT. SW-35-51-15-W4
Bruno Community Centre	PT. SW-11-52-10-W4	St. Peter and Paul Cemetery	PT. E-4-52-10-W4
Brush Hill Community Society	PT. SE-15-53-14-W4	Innisfree Cemetery	PT. NE-6-52-10-W4
Challey Community Association	PT. NE-10-52-11-W4	Innisfree Cemetery	PT. NE-10-50-11-W4
Clayton Community Society	PT. NE-24-50-8-W4	Lavoy Cemetery	PT. SW-5-52-13-W4
Fairwood Community Centre	PT. NE-34-53-14-W4	Minburn Cemetery	PT. NW-11-50-10-W4
Highlow Community Association	PT. NW-19-52-13-W4	Ranfurly Cemetery	PT. SE-15-51-12-W4
Hillock Community Society	PT. SW-17-52-11-W4	Hutterite Cemetery - Marmville	PT. NW-31-49-8-W4
Imperial Community Association	PT. SW-3-51-14-W4	Hutterite Cemetery - Museum	PT. NE-34-48-10-W4
Lake Alice Community League	PT. NW-11-49-11-W4	Hutterite Cemetery - Vegreville	PT. SW-20-50-13-W4
Liefeld Community Society	PT. SW-4-50-9-W4	Seventh Day Adventist Innisfree Cemetery	PT. NW-19-51-10-W4
Old Lamburg Community Centre	PT. NE-9-52-12-W4	Methodist Church Cemetery	PT. NW-21-5-9-W4
Old Vegreville Social Society	PT. SW-35-51-15-W4	Ranfurly Greek Catholic Cemetery	PT. SE-16-52-12-W4
Park Grove Community Centre	PT. SE-14-53-15-W4	New Kiew Greek Catholic Cemetery	PT. NW-22-53-13-W4
Ruthenian Greek Catholic Parish of St. Nicholas (Buccazp Hall)	PT. SW-35-52-11-W4	Ruthenian Greek Catholic Cemetery	PT. NE-36-53-11-W4
Ruthenian Greek Catholic Parish (New Kiew)	PT. NW-22-53-13-W4	Spring Creek Cemetery	PT. NE-24-52-11-W4
Sabaux Community Association	PT. SW-14-48-8-W4	St. Peter's Cemetery	PT. NW-35-52-11-W4
Sich Community Centre	PT. NE-32-53-15-W4	Royal Park Cemetery - St. Vladimir Ukrainian Orthodox	PT. SW-32-52-15-W4
Taras Shevchenko Ukrainian Education Society	PT. SE-12-52-11-W4	Ukrainian Catholic Cemetery	PT. SW-29-50-8-W4
Ukrainian Labor Farmer Temple Association	PT. NE-4-53-11-W4	Ukrainian Greek Orthodox Cemetery	PT. NW-13-51-16-W4
Willowview Society	PT. SW-24-48-10-W4	Sak-Koloma Cemetery	PT. SW-6-54-15-W4
Woodville Community Association	PT. SE-31-49-11-W4	Brush Hill Cemetery	PT. SW-14-53-14-W4
		The Synod of the Diocese of Edmonton	PT. NW-20-52-9-W4
		Akasu Cemetery	PT. NE-10-53-14-W4
		Town of Vegreville (cemetery)	PT. SE-20-52-14-W4

### Churches

Name	Location
Alberta Conference Corporation of 7th day Adventist Church	PT. NW-19-51-10-W4
Catholic Parish of St. Nikolaya	PT. SE-34-52-11-W4
Church of England, Parish of St. Albans	PT. NE-6-52-10-W4
Church of England Mission of St. Helens	PT. NW-20-52-9-W4
Northwest Canada Conference (Evangelical Church)	PT. NW-13-49-8-W4
Old Colony Mennonite Church of Two Hills	PT. SE-2-51-15-W4
Ruthenian Greek Catholic Parish	PT. SW-12-54-15-W4
Ruthenian Greek Catholic Parish	PT. NW-22-53-13-W4
Ruthenian Greek Catholic Parish	PT. SE-27-52-8-W4
Ukrainian Greek Orthodox Church of St. Mary	PT. SW-5-54-15-W4
Zion Church	PT. NE-10-53-14-W4

13	14	15	16
12	11	10	9
5	6	7	8
4	3	2	1

LSD Numbering Inside One Township

31	32	33	34	35	36
30	29	28	27	26	25
19	20	21	22	23	24
18	17	16	15	14	13
7	8	9	10	11	12
6	5	4	3	2	1

Section Grid Numbering Inside One Township

County of Minburn makes no representations or warranties regarding the information contained in this document, including, without limitation, and County of Minburn shall have no liability to such persons for any loss or damage whatsoever. This document shall not be copied or distributed to any person without the express written consent of County of Minburn.

Compiled and derived from the Rural Cadastral Digital Base December 1, 2021. 1:20,000 Digital Base.  
Land Ownership derived from municipal tax data, December 1, 2021.  
Building/Site information compiled from municipal assessment data, 2021.

Due to name length and parcel size, some parcels cannot be labeled. Not responsible for errors or omissions.

4909 - 50 Street, Box 550  
Vegreville, Alberta  
T9C 1R6  
Phone: (780) 632-2082  
Fax: (780) 632-6296

Email:  
info@minburncounty.ab.ca

Website:  
minburncounty.ab.ca



June 11, 2024

**Re: Renewal of Your School Council's Memberships in ASCA**

Dear Superintendent Corrigan:

On behalf of the ASCA Board of Directors, I would like to thank you for renewing the ASCA Membership for the school councils in your division! I ask that you please forward the **2024-2025 ASCA Welcome Letter** attached to this email to the school councils within your division to ensure they are aware of your generosity and so they can maintain access to the ASCA [Members Only](#) portion of our website

**REMINDER - Added Member Benefits for 2024-2025!**

ASCA Member School Councils will receive a **25% discount** on any [Scheduled Learning Opportunities](#) (SLOs) and specific [Individual Workshops](#) not offered within the SLOs.

As you have renewed before **August 31st, 2024**, your school division is eligible to receive the following added benefits for our 2024/2025 Membership year:

- ✓ A **25% discount** on any [Division Wide Learning Opportunity](#) requested for your school councils during the 2024-2025 year.
- ✓ A **25% discount** when asking ASCA to facilitate both (2) new **Principal Development** ASCA Learning Opportunities: *School Councils: What Every Principal Needs to Know* and *A Principal's Guide to a Functioning Fundraising Association*.

**Parent Voice Through School Councils**

Every school council membership strengthens the collective parent voice through school councils in provincial education. ASCA is committed to ensuring parents are valued and informed education partners and will continue to present the parent perspective, provided by its Member School Councils, to the government and others in provincial education.

**What You Need to Do**

- ✓ Circulate the **2024-2025 ASCA Membership Welcome Letter** to all the School Councils in your division in order to assist each designated contact access their [ASCA Members Only account](#).
- ✓ Provide **contact information for the designated contact for your School Division** to receive access to the ASCA Members Only section to [support@albertaschoolcouncils.ca](mailto:support@albertaschoolcouncils.ca).

I look forward to hearing back from you and welcome a discussion at any time of how ASCA can support your division's school council goals and parent engagement strategies, contributing to system assurance within your school division.

Kindest Regards,

A handwritten signature in purple ink that reads "Wendy Keiver".

Wendy Keiver  
Executive Director  
780.454.9867 Ext 101